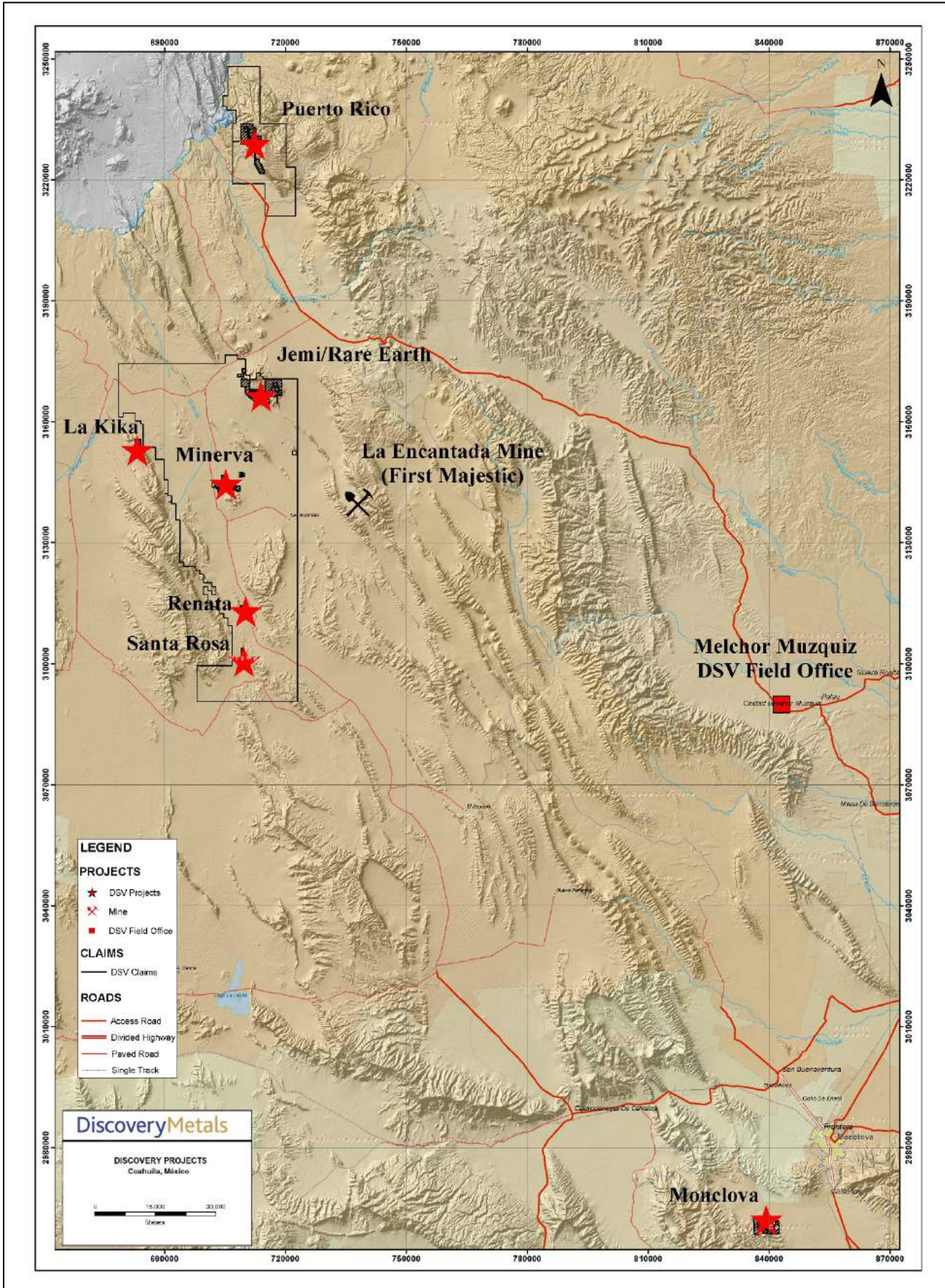
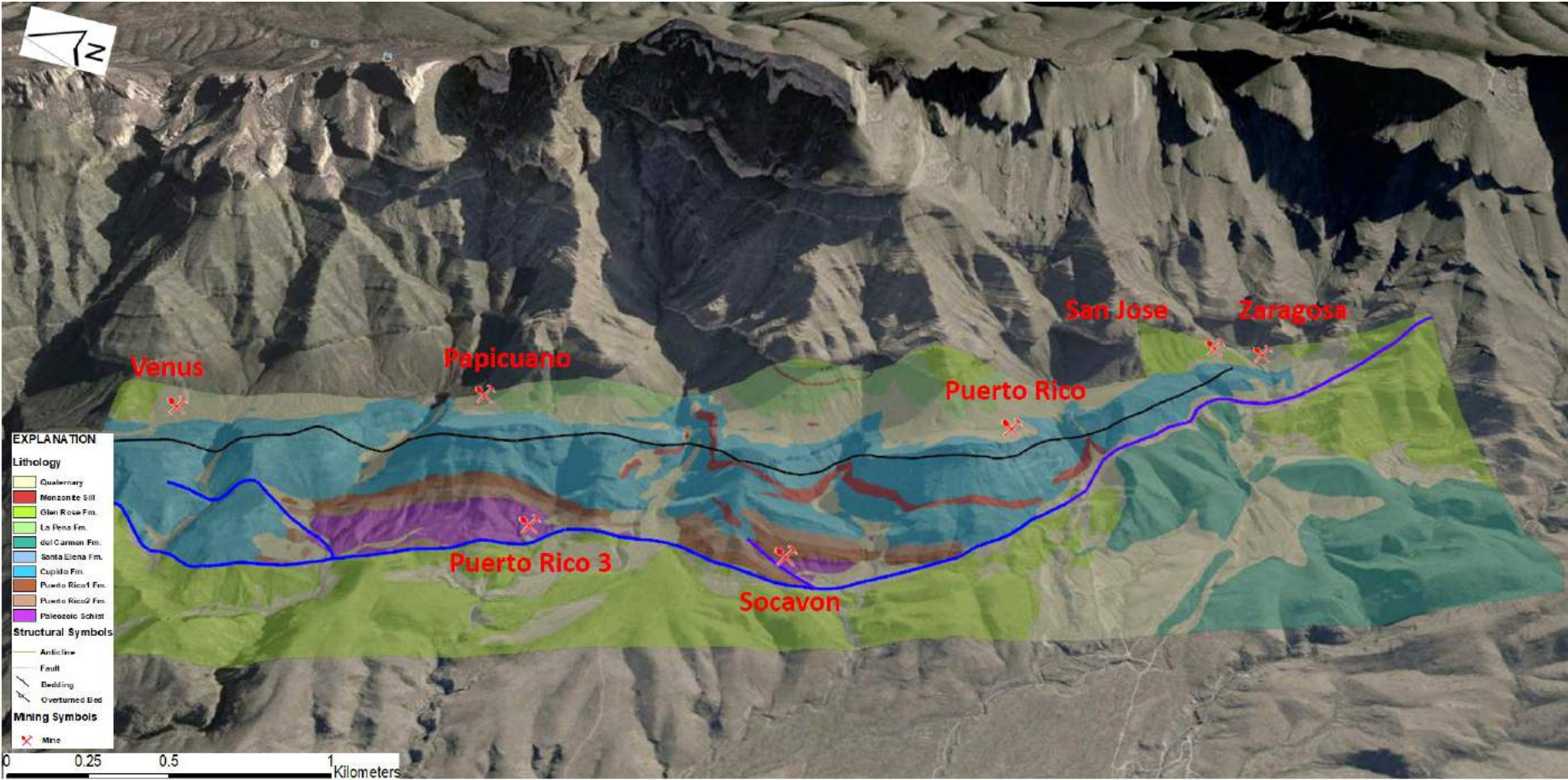


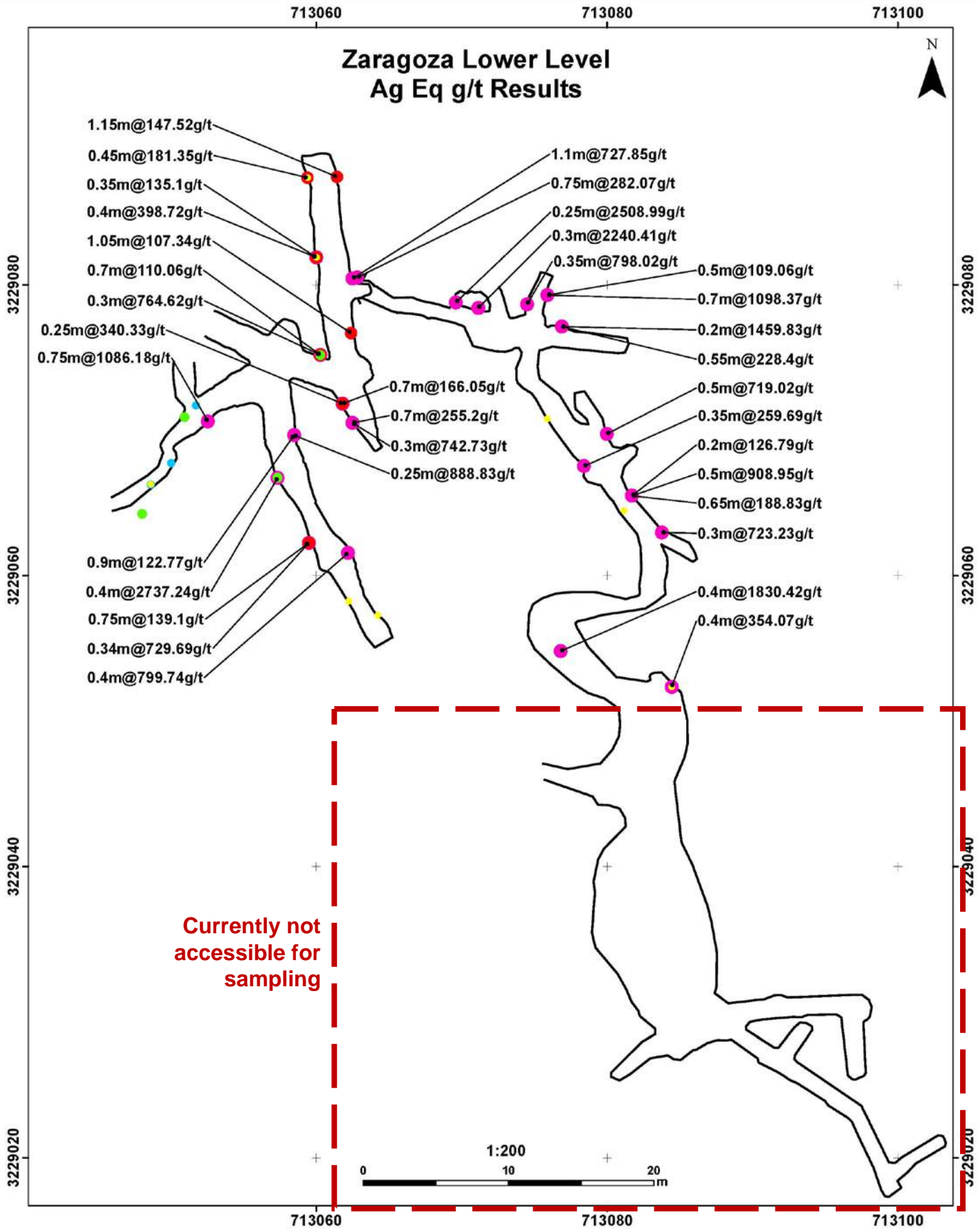
Discovery Metals (DSV) Project locations | Northern Coahuila, Mexico



3D geology map looking East, Puerto Rico Project.



Zaragoza Lower Level Ag Eq g/t Results



- 1.15m@147.52g/t
- 0.45m@181.35g/t
- 0.35m@135.1g/t
- 0.4m@398.72g/t
- 1.05m@107.34g/t
- 0.7m@110.06g/t
- 0.3m@764.62g/t
- 0.25m@340.33g/t
- 0.75m@1086.18g/t
- 0.9m@122.77g/t
- 0.4m@2737.24g/t
- 0.75m@139.1g/t
- 0.34m@729.69g/t
- 0.4m@799.74g/t
- 1.1m@727.85g/t
- 0.75m@282.07g/t
- 0.25m@2508.99g/t
- 0.3m@2240.41g/t
- 0.35m@798.02g/t
- 0.5m@109.06g/t
- 0.7m@1098.37g/t
- 0.2m@1459.83g/t
- 0.55m@228.4g/t
- 0.5m@719.02g/t
- 0.35m@259.69g/t
- 0.2m@126.79g/t
- 0.5m@908.95g/t
- 0.65m@188.83g/t
- 0.3m@723.23g/t
- 0.4m@1830.42g/t
- 0.4m@354.07g/t
- 0.7m@166.05g/t
- 0.7m@255.2g/t
- 0.3m@742.73g/t
- 0.25m@888.83g/t

**Currently not
accessible for
sampling**

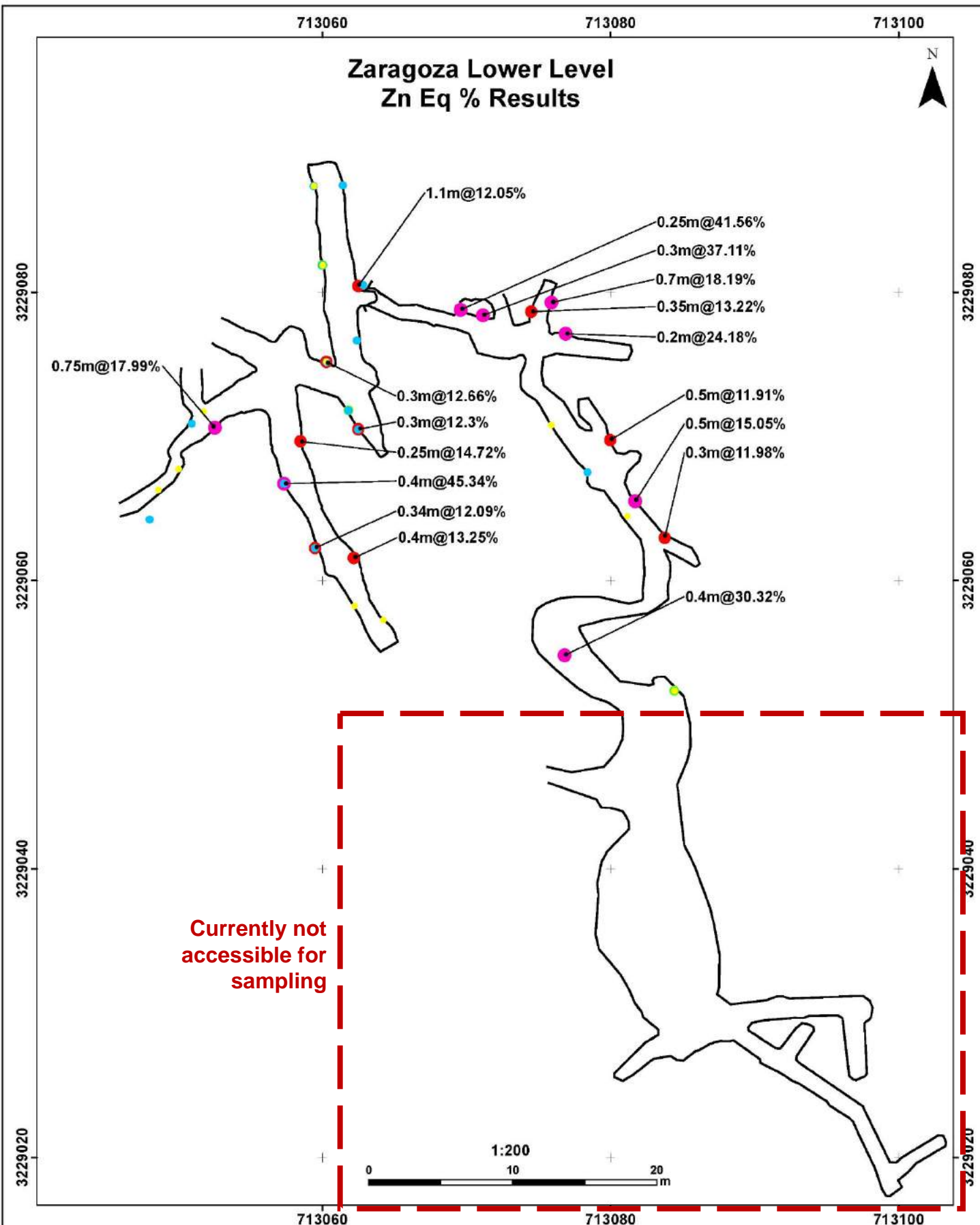
Ag Eq g/t

- < 20
- 20 - 50
- 50 - 100
- 100 - 200
- > 200

DiscoveryMetals

PUERTO RICO PROJECT
ZARAGOZA LOWER LEVEL
UNDERGROUND WORKS

Zaragoza Lower Level Zn Eq % Results



Currently not accessible for sampling

Zn Eq %

- < 1
- 1 - 5
- 5 - 10
- 10 - 15
- > 15

DiscoveryMetals
 PUERTO RICO PROJECT
 ZARAGOZA LOWER LEVEL
 UNDERGROUND WORKS

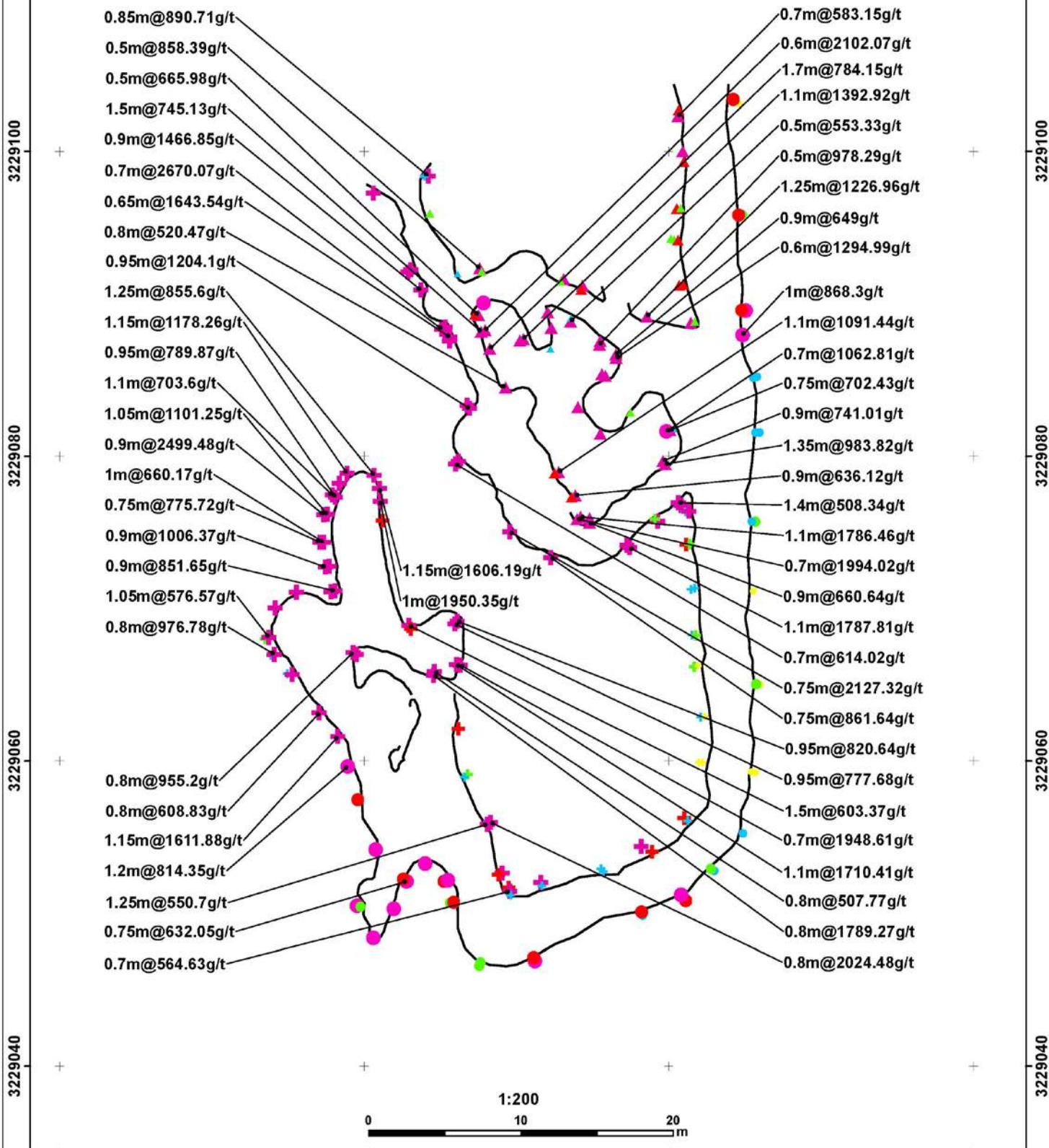
713020

713040

713060

713080

Zaragoza Grande Ag Eq g/t Results



| Ag Eq g/t (Reported April 30th, 2018) | | Ag Eq g/t (Reported May 24, 2018) | | Ag Eq g/t Samples (215202 - 215252) | |
|--|-------------|--------------------------------------|-------------|--|-------------|
| ★ < 20 | ▲ 100 - 200 | ★ < 20 | ✚ 100 - 200 | ★ < 20 | ● 100 - 200 |
| ▲ 20 - 50 | ▲ > 200 | ✚ 20 - 50 | ✚ > 200 | ● 20 - 50 | ● > 200 |
| ▲ 50 - 100 | | ✚ 50 - 100 | | ● 50 - 100 | |

DiscoveryMetals
 PUERTO RICO PROJECT
 ZARAGOZA GRANDE MINE
 UNDERGROUND WORKS

713020

713040

713060

713080

Zaragoza Grande Zn Eq %t Results



3229100

3229100

3229080

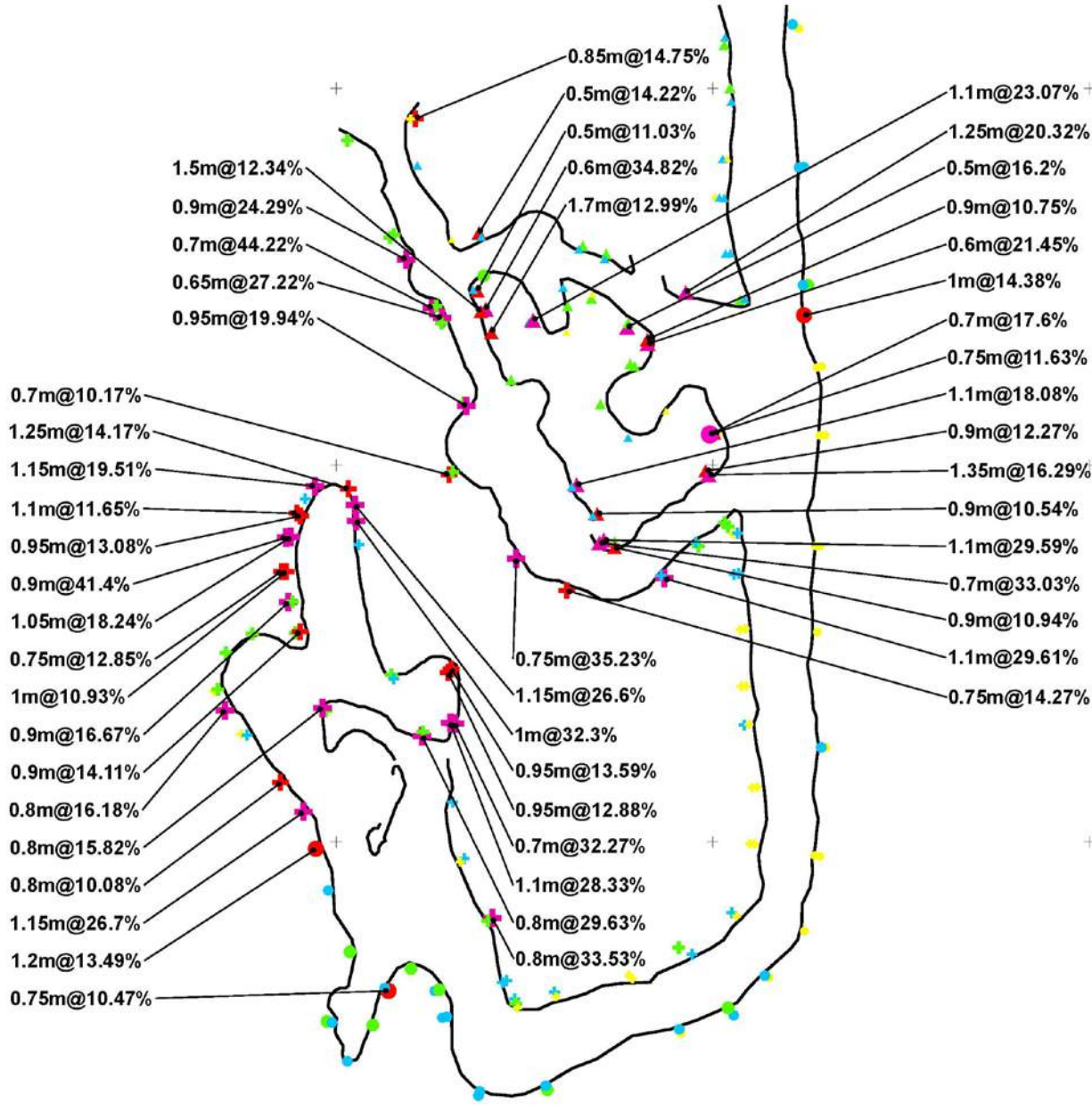
3229080

3229060

3229060

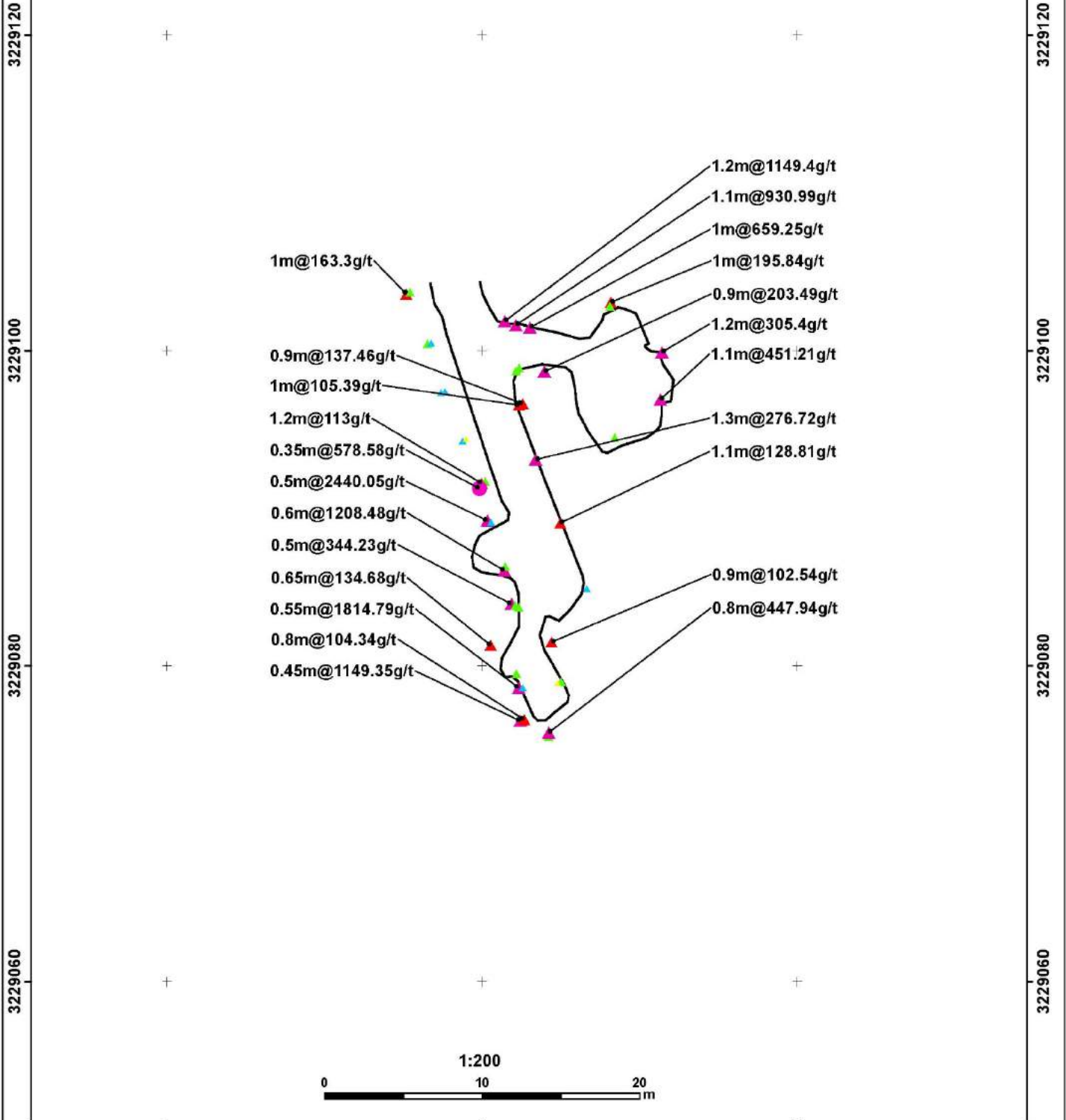
3229040

3229040



| | | |
|--|--|--|
| <p>Zn Eq % (Reported April 30th, 2018)</p> <p>★ < 1 ▲ 10 - 15 ▲ 1 - 5 ▲ > 15 ▲ 5 - 10</p> | <p>Zn Eq % (Reported May 24, 2018)</p> <p>★ < 1 + 10 - 15 + 1 - 5 + > 15 + 5 - 10</p> | <p>Zn Eq % Samples (215202 - 215252)</p> <p>★ < 1 ● 10 - 15 ● 1 - 5 ● > 15 ● 5 - 10</p> |
| <p>1:200</p> <p>0 10 20 m</p> | | |
| <div style="border: 1px solid black; padding: 5px; display: inline-block;"> <p>DiscoveryMetals</p> <p>PUERTO RICO PROJECT</p> <p>ZARAGOZA GRANDE MINE</p> <p>UNDERGROUND WORKS</p> </div> | | |

Zaragoza Chica Ag Eq g/t Results



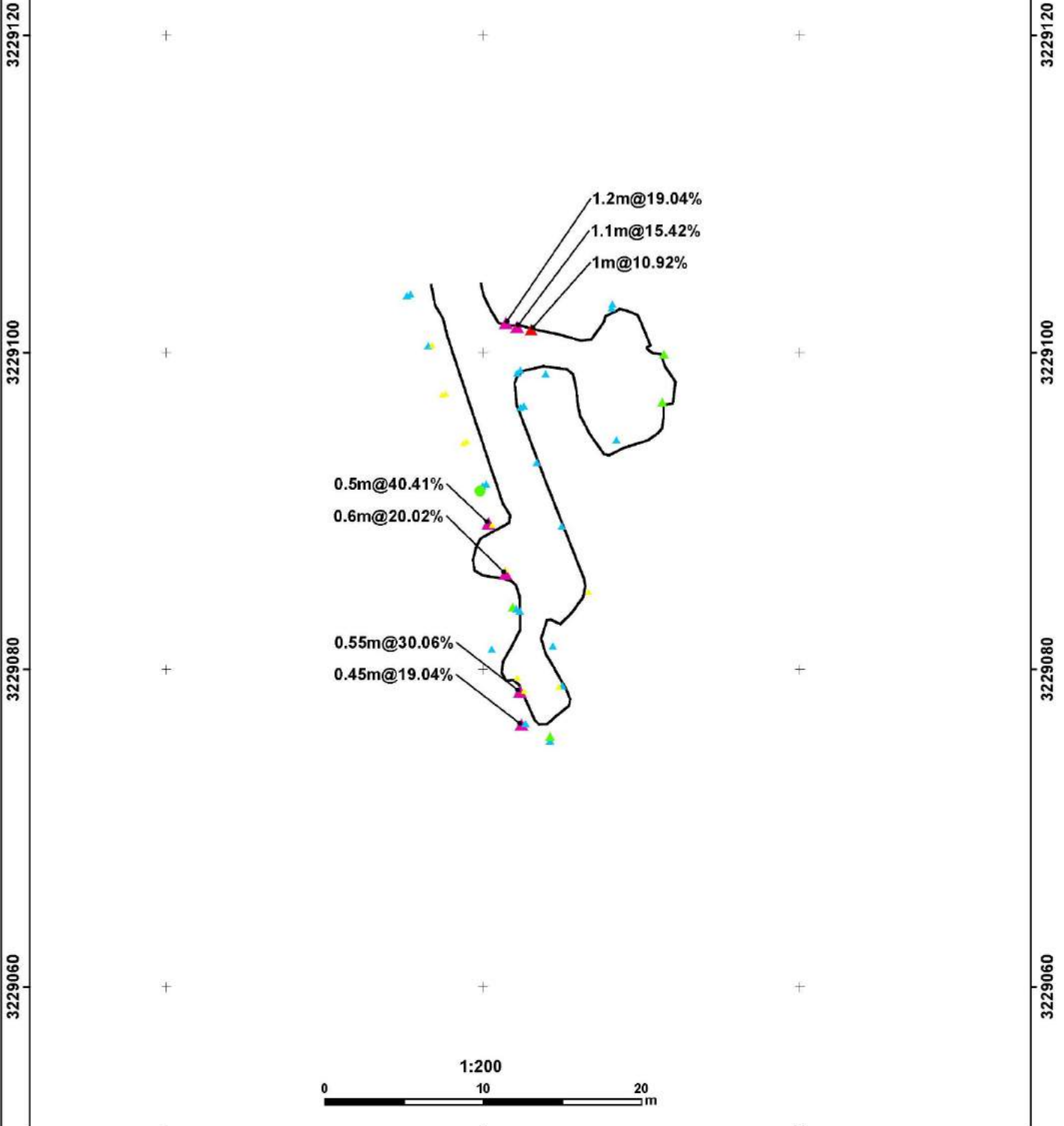
Ag Eq g/t
(Reported April 30th, 2018)

| | |
|------------|-------------|
| ▲ < 20 | ▲ 100 - 200 |
| ▲ 20 - 50 | ▲ > 200 |
| ▲ 50 - 100 | |

DiscoveryMetals

PUERTO RICO PROJECT
ZARAGOZA CHICA MINE
UNDERGROUND WORKS

Zaragoza Chica Zn Eq % Results



Zn Eq %
(Reported April 30th, 2018)

- | | |
|----------|-----------|
| ● < 1 | ▲ 10 - 15 |
| ▲ 1 - 5 | ▲ > 15 |
| ▲ 5 - 10 | |

DiscoveryMetals
 PUERTO RICO PROJECT
 ZARAGOZA CHICA MINE
 UNDERGROUND WORKS

Puerto Rico Project | Zaragoza Mine | Samples 215202-313 | Sample details

| ID SAMPLE | Zone name | Sample Type | Channel | Length (m) | Mineralization Style | Ag g/t | Cu% % | Pb% % | Zn% % |
|-----------|----------------------|-------------|---------|------------|----------------------|--------|-------|-------|-------|
| 215202 | Zaragoza Grande | channel | ZG89 | 1.2 | CHIMNEY/FAULT | 73 | 0.1 | 5.7 | 8.3 |
| 215203 | Zaragoza Grande | channel | ZG90 | 0.7 | CHIMNEY/FAULT | 8 | 0.0 | 0.6 | 1.3 |
| 215204 | Zaragoza Grande | channel | ZG91 | 1.5 | CHIMNEY/FAULT | 24 | 0.0 | 1.2 | 4.6 |
| 215205 | Zaragoza Grande | channel | ZG92 | 0.7 | WALLROCK | 39 | 0.0 | 2.4 | 3.2 |
| 215206 | Zaragoza Grande | channel | ZG92 | 0.7 | WALLROCK | 5 | 0.0 | 0.8 | 0.7 |
| 215207 | Zaragoza Grande | channel | ZG93 | 0.8 | WALLROCK | 33 | 0.0 | 3.9 | 1.2 |
| 215208 | Zaragoza Grande | channel | ZG94 | 1.0 | WALLROCK | 45 | 0.0 | 4.3 | 2.0 |
| 215209 | Zaragoza Grande | channel | ZG95 | 0.8 | WALLROCK | 157 | 0.1 | 6.5 | 3.4 |
| 215210 | Zaragoza Grande | channel | ZG95 | 0.8 | WALLROCK | 8 | 0.0 | 1.0 | 1.7 |
| 215212 | Zaragoza Grande | channel | ZG96 | 1.0 | CHIMNEY/FAULT | 72 | 0.1 | 2.8 | 3.3 |
| 215213 | Zaragoza Grande | channel | ZG97 | 1.0 | WALLROCK | 64 | 0.0 | 1.0 | 0.5 |
| 215214 | Zaragoza Grande | channel | ZG97 | 1.0 | MANTO | 56 | 0.0 | 4.0 | 2.1 |
| 215215 | Zaragoza Grande | channel | ZG98 | 1.1 | WALLROCK | 14 | 0.0 | 0.6 | 0.9 |
| 215216 | Zaragoza Grande | channel | ZG98 | 0.8 | MANTO | 37 | 0.0 | 1.9 | 1.3 |
| 215217 | Zaragoza Grande | channel | ZG99 | 1.0 | WALLROCK | 9 | 0.0 | 0.6 | 0.5 |
| 215218 | Zaragoza Grande | channel | ZG99 | 0.9 | WALLROCK | 8 | 0.0 | 0.3 | 0.8 |
| 215219 | Zaragoza Grande | channel | ZG100 | 0.4 | WALLROCK | 28 | 0.0 | 1.4 | 4.9 |
| 215221 | Zaragoza Grande | channel | ZG100 | 1.2 | WALLROCK | 11 | 0.0 | 1.4 | 1.1 |
| 215222 | Zaragoza Grande | channel | ZG101 | 0.8 | WALLROCK | 5 | 0.0 | 0.1 | 0.4 |
| 215223 | Zaragoza Grande | channel | ZG101 | 1.2 | WALLROCK | 10 | 0.0 | 1.1 | 1.5 |
| 215224 | Zaragoza Grande | channel | ZG102 | 0.9 | CHIMNEY/FAULT | 5 | 0.0 | 0.5 | 1.7 |
| 215225 | Zaragoza Grande | channel | ZG103 | 1.1 | CHIMNEY/FAULT | 9 | 0.0 | 1.2 | 4.2 |
| 215226 | Zaragoza Grande | channel | ZG104 | 1.1 | WALLROCK | 4 | 0.0 | 0.5 | 0.1 |
| 215227 | Zaragoza Grande | channel | ZG104 | 0.9 | WALLROCK | 7 | 0.0 | 1.2 | 0.3 |
| 215228 | Zaragoza Grande | channel | ZG105 | 1.4 | CHIMNEY/FAULT | 4 | 0.0 | 0.5 | 0.1 |
| 215229 | Zaragoza Grande | channel | ZG106 | 1.0 | WALLROCK | 1 | 0.0 | 0.2 | 0.1 |
| 215232 | Zaragoza Grande | channel | ZG106 | 1.0 | CHIMNEY/FAULT | 2 | 0.0 | 0.3 | 0.1 |
| 215233 | Zaragoza Grande | channel | ZG107 | 1.0 | CHIMNEY/FAULT | 2 | 0.0 | 0.1 | 0.1 |
| 215234 | Zaragoza Grande | channel | ZG107 | 1.1 | CHIMNEY/FAULT | 9 | 0.0 | 0.3 | 0.9 |
| 215235 | Zaragoza Grande | channel | ZG108 | 1.1 | CHIMNEY/FAULT | 5 | 0.0 | 0.1 | 0.1 |
| 215236 | Zaragoza Grande | channel | ZG109 | 0.7 | WALLROCK | 8 | 0.1 | 0.2 | 0.6 |
| 215237 | Zaragoza Grande | channel | ZG109 | 1.1 | WALLROCK | 4 | 0.0 | 0.1 | 0.3 |
| 215238 | Zaragoza Grande | channel | ZG110 | 1.1 | WALLROCK | 5 | 0.0 | 0.1 | 0.5 |
| 215239 | Zaragoza Grande | channel | ZG110 | 1.0 | WALLROCK | 5 | 0.0 | 0.2 | 0.6 |
| 215240 | Zaragoza Grande | channel | ZG111 | 1.0 | WALLROCK | 6 | 0.0 | 0.5 | 0.2 |
| 215242 | Zaragoza Grande | channel | ZG111 | 1.1 | WALLROCK | 3 | 0.0 | 0.3 | 0.1 |
| 215243 | Zaragoza Grande | channel | ZG112 | 0.8 | WALLROCK | 3 | 0.0 | 0.3 | 0.1 |
| 215244 | Zaragoza Grande | channel | ZG112 | 1.0 | WALLROCK | 501 | 1.5 | 2.4 | 1.6 |
| 215245 | Zaragoza Grande | channel | ZG113 | 0.9 | WALLROCK | 106 | 0.0 | 0.9 | 2.8 |
| 215246 | Zaragoza Grande | channel | ZG113 | 1.1 | CHIMNEY/FAULT | 86 | 0.0 | 1.3 | 0.6 |
| 215247 | Zaragoza Grande | channel | ZG114 | 1.0 | WALLROCK | 11 | 0.0 | 0.6 | 1.0 |
| 215248 | Zaragoza Grande | channel | ZG114 | 1.0 | WALLROCK | 16 | 0.0 | 1.3 | 0.8 |
| 215249 | Zaragoza Grande | channel | ZG115 | 1.0 | WALLROCK | 4 | 0.0 | 0.2 | 0.1 |
| 215250 | Zaragoza Grande | channel | ZG115 | 1.0 | WALLROCK | 14 | 0.1 | 0.7 | 1.3 |
| 215251 | Zaragoza Grande | channel | ZG116 | 0.7 | MANTO | 37 | 0.1 | 5.1 | 13.4 |
| 215252 | Zaragoza Grande | channel | ZG117 | 0.5 | MANTO | 222 | 0.6 | 2.0 | 0.5 |
| 215253 | Zaragoza Chica | channel | ZC27 | 0.4 | MANTO | 64 | 0.1 | 12.1 | 0.3 |
| 215254 | Zaragoza Lower Level | channel | ZL1 | 0.8 | WALLROCK | 7 | 0.0 | 1.1 | 0.2 |
| 215255 | Zaragoza Lower Level | channel | ZL1 | 0.3 | MANTO | 275 | 0.1 | 8.8 | 2.0 |
| 215256 | Zaragoza Lower Level | channel | ZL2 | 0.7 | WALLROCK | 14 | 0.0 | 2.2 | 0.1 |
| 215257 | Zaragoza Lower Level | channel | ZL2 | 0.6 | MANTO | 7 | 0.2 | 0.4 | 0.3 |
| 215258 | Zaragoza Lower Level | channel | ZL3 | 0.4 | WALLROCK | 46 | 0.0 | 7.9 | 0.5 |
| 215259 | Zaragoza Lower Level | channel | ZL3 | 0.4 | MANTO | 10 | 0.0 | 2.4 | 0.4 |
| 215261 | Zaragoza Lower Level | channel | ZL3 | 0.7 | WALLROCK | 1 | 0.0 | 0.2 | 0.0 |
| 215262 | Zaragoza Lower Level | channel | ZL4 | 0.5 | MANTO | 23 | 0.0 | 3.4 | 0.3 |
| 215263 | Zaragoza Lower Level | channel | ZL4 | 0.8 | WALLROCK | 0.5 | 0.0 | 0.0 | 0.0 |
| 215264 | Zaragoza Lower Level | channel | ZL5 | 1.2 | WALLROCK | 26 | 0.0 | 0.2 | 1.8 |
| 215265 | Zaragoza Lower Level | channel | ZL6 | 1.1 | WALLROCK | 167 | 0.1 | 11.1 | 1.8 |
| 215266 | Zaragoza Lower Level | channel | ZL7 | 0.8 | CHIMNEY/FAULT | 56 | 0.0 | 4.5 | 0.7 |
| 215267 | Zaragoza Lower Level | channel | ZL8 | 0.3 | MANTO | 79 | 0.1 | 6.0 | 36.1 |
| 215268 | Zaragoza Lower Level | channel | ZL9 | 0.6 | WALLROCK | 10 | 0.1 | 0.3 | 0.6 |
| 215269 | Zaragoza Lower Level | channel | ZL9 | 0.3 | MANTO | 216 | 0.2 | 10.4 | 26.2 |
| 215270 | Zaragoza Lower Level | channel | ZL10 | 0.4 | MANTO | 1 | 0.0 | 0.1 | 13.1 |
| 215271 | Zaragoza Lower Level | channel | ZL11 | 0.5 | WALLROCK | 13 | 0.1 | 0.6 | 1.1 |
| 215272 | Zaragoza Lower Level | channel | ZL11 | 0.7 | MANTO | 2 | 0.3 | 0.1 | 17.6 |
| 215273 | Zaragoza Lower Level | channel | ZL12 | 0.6 | WALLROCK | 14 | 0.9 | 0.2 | 1.7 |
| 215274 | Zaragoza Lower Level | channel | ZL12 | 0.2 | MANTO | 3 | 0.1 | 0.0 | 24.0 |
| 215275 | Zaragoza Lower Level | channel | ZL13 | 0.5 | MANTO | 268 | 0.5 | 4.8 | 3.3 |
| 215276 | Zaragoza Lower Level | channel | ZL14 | 0.2 | WALLROCK | 16 | 0.8 | 0.0 | 0.2 |
| 215277 | Zaragoza Lower Level | channel | ZL14 | 0.7 | WALLROCK | 33 | 1.1 | 0.1 | 0.3 |
| 215278 | Zaragoza Lower Level | channel | ZL14 | 0.5 | MANTO | 2 | 0.1 | 0.1 | 14.8 |
| 215279 | Zaragoza Lower Level | channel | ZL15 | 0.8 | WALLROCK | 3 | 0.2 | 0.0 | 0.5 |
| 215282 | Zaragoza Lower Level | channel | ZL15 | 0.3 | MANTO | 1 | 0.1 | 0.1 | 11.8 |
| 215283 | Zaragoza Lower Level | channel | ZL16 | 0.4 | MANTO | 17 | 0.7 | 0.0 | 4.1 |
| 215284 | Zaragoza Lower Level | channel | ZL16 | 0.7 | WALLROCK | 3 | 0.0 | 0.0 | 0.2 |
| 215285 | Zaragoza Lower Level | channel | ZL17 | 0.4 | MANTO | 131 | 0.1 | 11.1 | 20.5 |
| 215286 | Zaragoza Lower Level | channel | ZL18 | 0.8 | WALLROCK | 5 | 0.0 | 0.1 | 0.1 |
| 215287 | Zaragoza Lower Level | channel | ZL19 | 0.9 | WALLROCK | 6 | 0.0 | 0.2 | 0.2 |
| 215288 | Zaragoza Lower Level | channel | ZL19 | 0.4 | WALLROCK | 9 | 0.2 | 1.0 | 3.0 |
| 215289 | Zaragoza Lower Level | channel | ZL20 | | WALLROCK | 5 | 0.0 | 0.1 | 0.1 |
| 215290 | Zaragoza Lower Level | channel | ZL21 | 1.1 | WALLROCK | 37 | 0.0 | 1.0 | 0.5 |
| 215291 | Zaragoza Lower Level | channel | ZL22 | 0.3 | MANTO | 127 | 0.0 | 4.6 | 7.1 |
| 215292 | Zaragoza Lower Level | channel | ZL22 | 0.7 | WALLROCK | 31 | 0.0 | 0.6 | 3.3 |
| 215293 | Zaragoza Lower Level | channel | ZL23 | 0.3 | MANTO | 45 | 0.0 | 3.7 | 2.4 |
| 215294 | Zaragoza Lower Level | channel | ZL23 | 0.7 | WALLROCK | 21 | 0.0 | 2.8 | 0.5 |
| 215295 | Zaragoza Lower Level | channel | ZL24 | 1.0 | WALLROCK | 4 | 0.0 | 0.4 | 0.3 |
| 215296 | Zaragoza Lower Level | channel | ZL25 | 0.9 | WALLROCK | 18 | 0.0 | 2.2 | 0.3 |
| 215297 | Zaragoza Lower Level | channel | ZL25 | 0.3 | MANTO | 107 | 0.1 | 16.4 | 1.9 |
| 215298 | Zaragoza Lower Level | channel | ZL26 | 0.5 | WALLROCK | 6 | 0.0 | 0.7 | 0.3 |
| 215299 | Zaragoza Lower Level | channel | ZL26 | 0.4 | MANTO | 41 | 0.0 | 4.4 | 9.6 |
| 215300 | Zaragoza Lower Level | channel | ZL27 | 1.0 | WALLROCK | 2 | 0.0 | 0.1 | 0.1 |
| 215302 | Zaragoza Lower Level | channel | ZL28 | 1.0 | WALLROCK | 5 | 0.0 | 0.2 | 0.1 |
| 215303 | Zaragoza Lower Level | channel | ZL28 | 0.3 | MANTO | 49 | 0.0 | 1.1 | 10.5 |
| 215304 | Zaragoza Lower Level | channel | ZL29 | 0.8 | WALLROCK | 5 | 0.0 | 0.5 | 1.9 |
| 215305 | Zaragoza Lower Level | channel | ZL30 | 0.4 | MANTO | 133 | 0.3 | 4.5 | 39.6 |
| 215306 | Zaragoza Lower Level | channel | ZL30 | 0.9 | WALLROCK | 6 | 0.0 | 0.4 | 0.7 |
| 215307 | Zaragoza Lower Level | channel | ZL31 | 0.8 | WALLROCK | 33 | 0.0 | 1.9 | 16.1 |
| 215308 | Zaragoza Lower Level | channel | ZL32 | 0.8 | WALLROCK | 6 | 0.0 | 0.7 | 0.2 |
| 215309 | Zaragoza Lower Level | channel | ZL33 | 0.7 | WALLROCK | 5 | 0.0 | 0.4 | 0.7 |
| 215310 | Zaragoza Lower Level | channel | ZL34 | 0.7 | WALLROCK | 3 | 0.0 | 0.2 | 0.2 |
| 215311 | Zaragoza Lower Level | channel | ZL34 | 0.4 | MANTO | 4 | 0.0 | 0.1 | 0.1 |
| 215312 | Zaragoza Lower Level | channel | ZL35 | 0.6 | WALLROCK | 5 | 0.0 | 0.2 | 0.8 |
| 215313 | Zaragoza Lower Level | channel | ZL35 | 0.7 | WALLROCK | 4 | 0.0 | 0.2 | 0.5 |