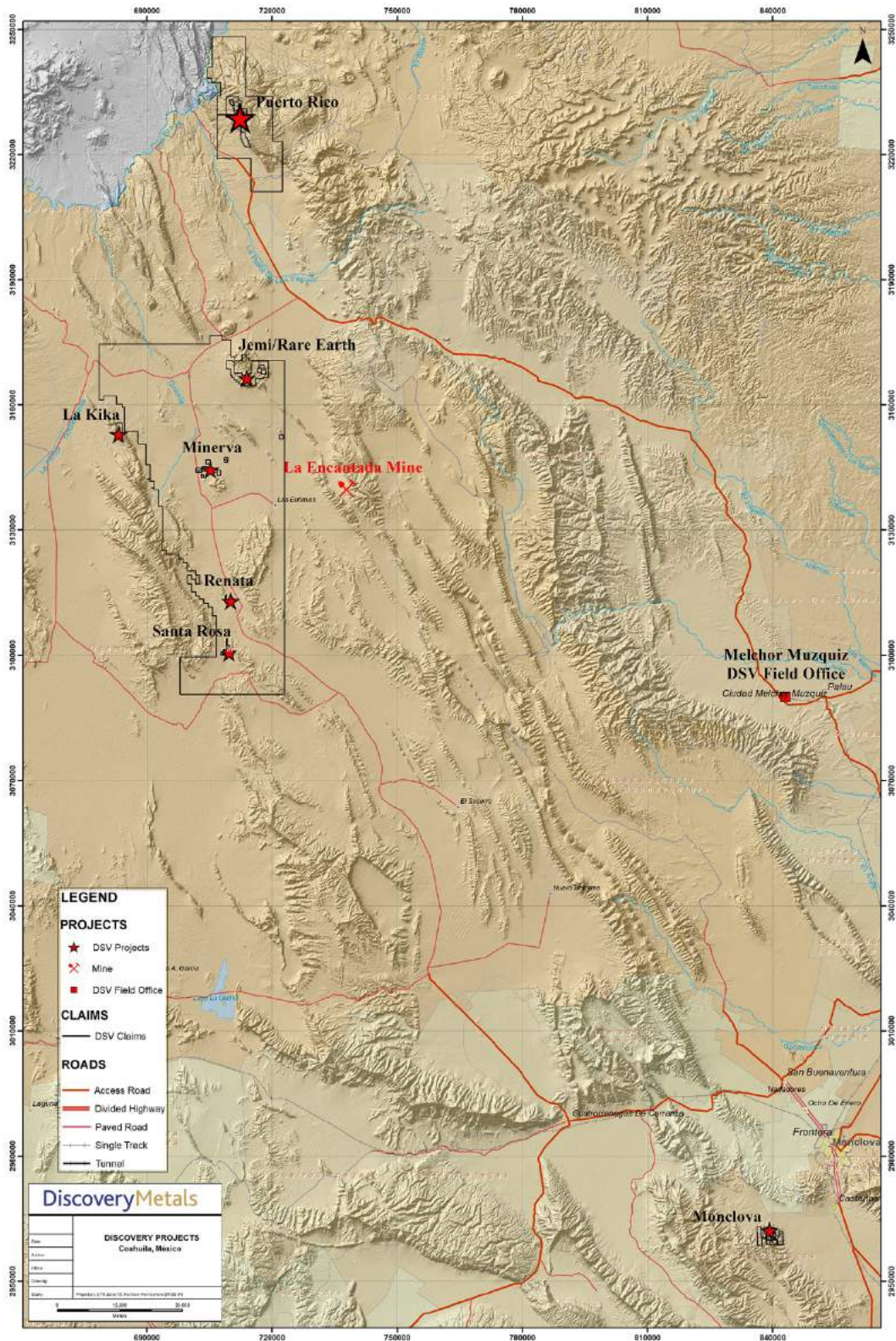
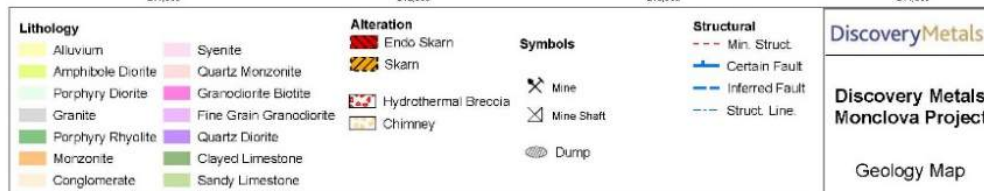
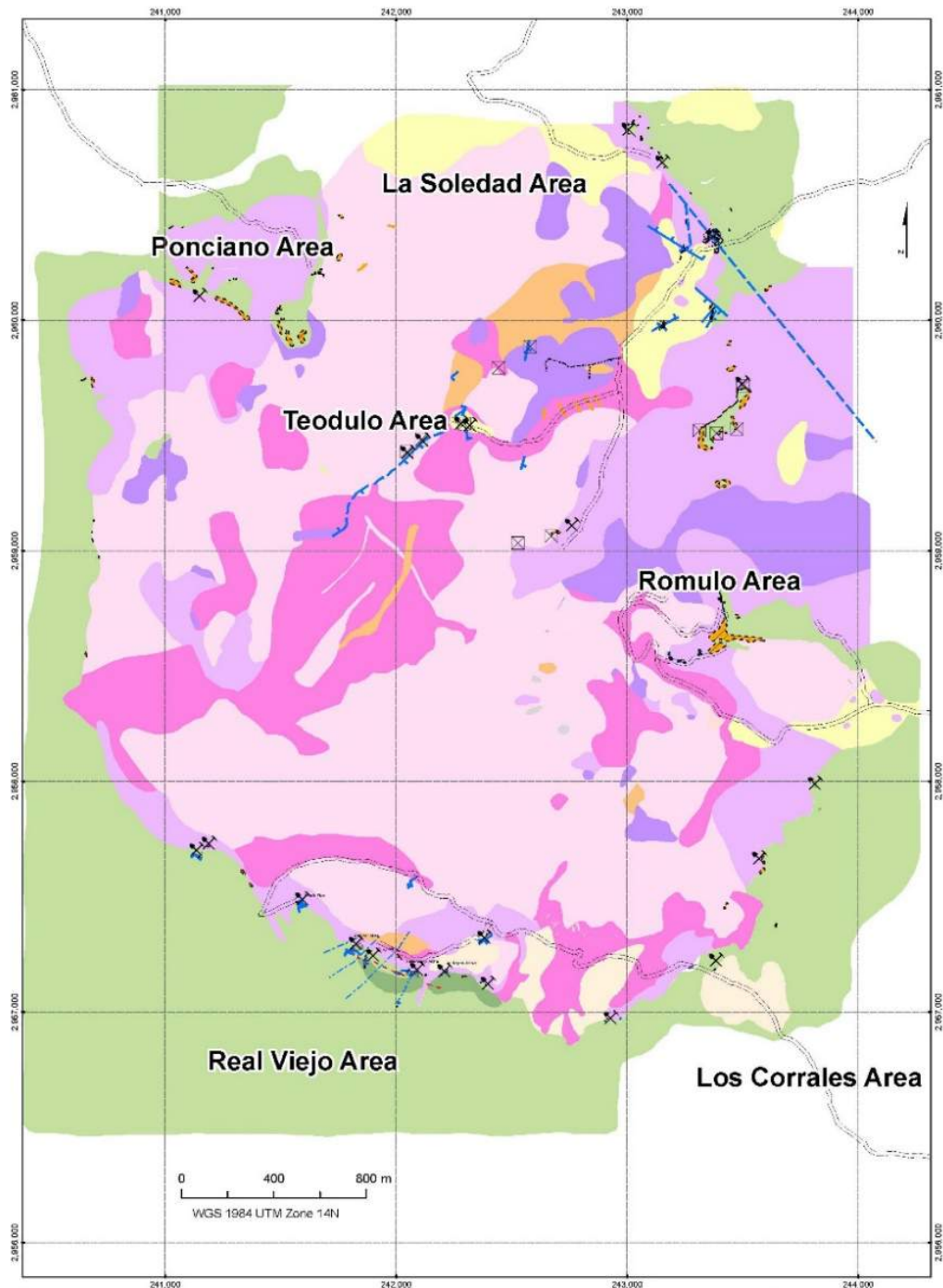


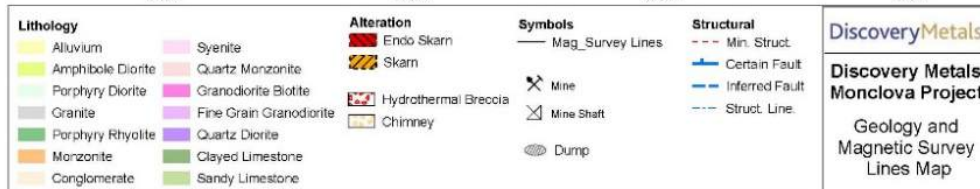
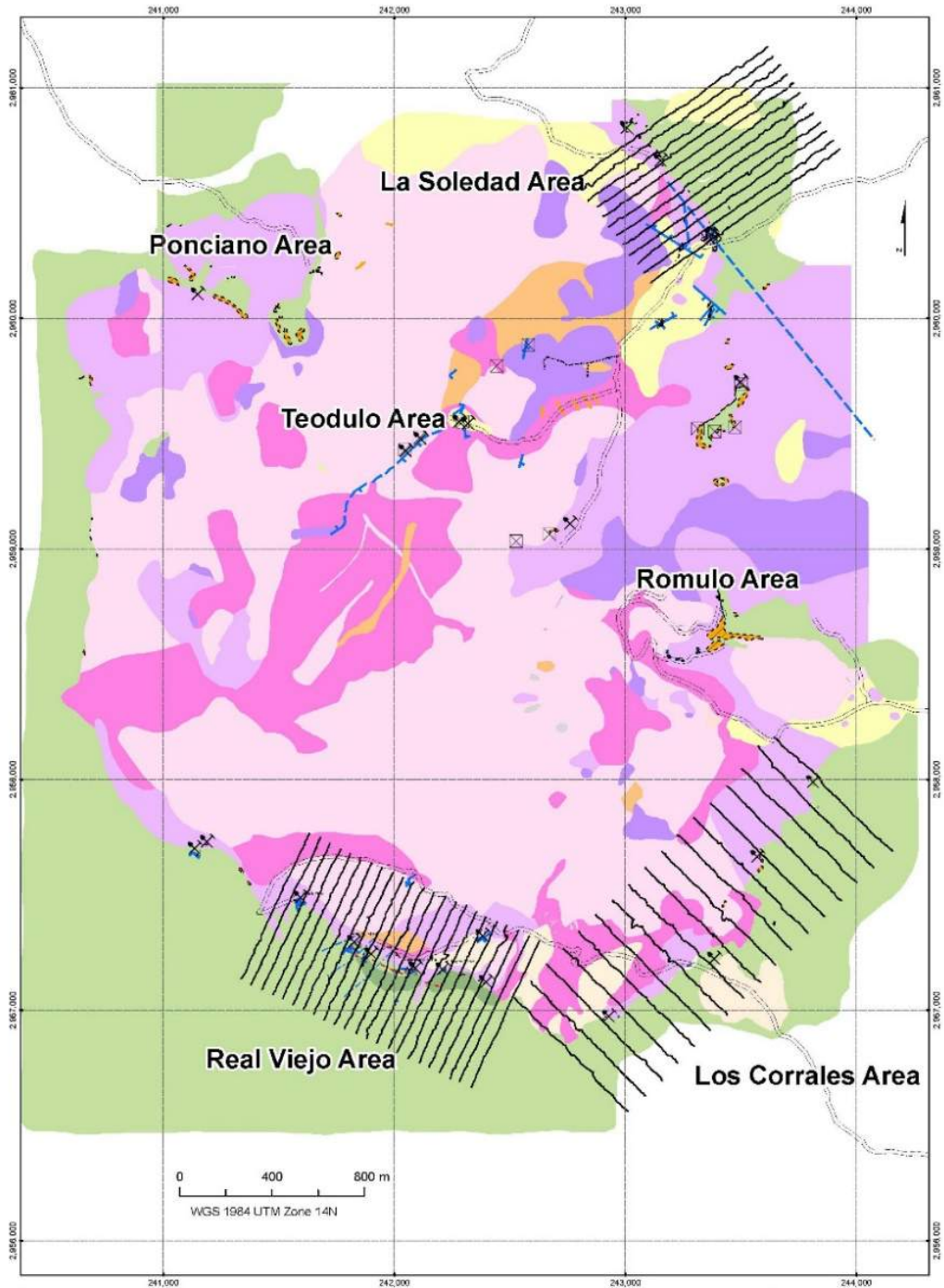
Discovery | Projects map



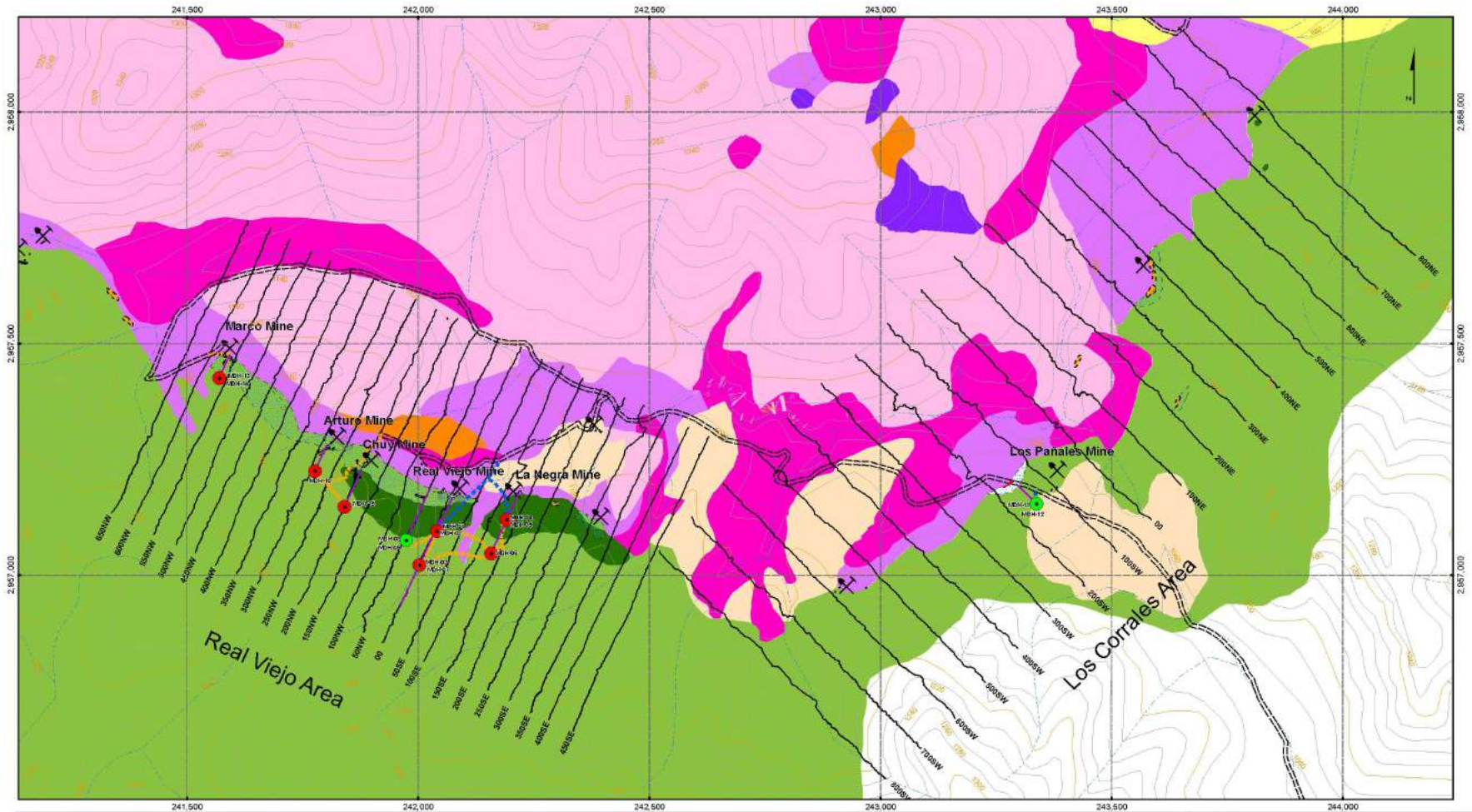
Monclova | geology map



Monclova | mag grid



Monclova | Real Viejo/Corrales mag grids



Lithology Alluvium Porphyry Diorite Granite Monzonite Conglomerate	Syenite Granodiorite Biotite Fine Grain Granodiorite Quartz Diorite Black Limestone Limestone	Roads Existing Road New Road Trail_Proposed	Drilling Prior_1 Prior_2 Surface Projection	Alteration Endo Skarn Skarn Recrystallization	Symbols Mine Mine Shaft Mag Survey Lines Dump	DiscoveryMetals Monclova Project Real Viejo-Los Corrales Mag Survey Lines
--	--	---	---	---	--	--

Scale: 0 200 400 m
WGS 1984 UTM Zone 14N

Real Viejo | recent surface sampling

Select results from 2018 surface sampling program

SAMPLE	WIDTH (M)	AG G/T	PB %	ZN %	ZN+PB %	ZNEQ %*	AGEQ G/T*	MINZ. TYPE
223659	1.2	240	1.4	11.4	12.8	16.3	987	breccia
223660	1.5	611	1.9	6.1	8.0	17.5	1056	breccia
223661	1.5	747	0.8	9.0	9.7	21.9	1321	breccia
223666	1.2	962	7.2	16.2	23.3	36.9	2229	breccia
223675	1.4	211	6.9	8.9	15.8	17.0	1027	breccia
223688	1.0	280	1.9	16.8	18.7	22.7	1371	breccia
223689	0.9	493	2.4	6.0	8.4	15.8	952	breccia
223690	0.7	363	1.6	8.6	10.3	15.8	951	breccia
223696	1.0	322	1.0	23.7	24.7	29.7	1795	breccia
223697	1.0	151	1.6	15.0	16.6	18.6	1121	breccia
223725	0.8	151	5.2	8.8	14.0	14.8	893	manto
223727	0.8	72	1.2	13.3	14.4	15.2	920	manto
223809	1.2	561	1.0	9.7	10.7	19.7	1190	breccia
223810	0.3	69	0.7	40.2	40.9	41.9	2532	manto
223812	0.4	276	3.4	6.2	9.6	13.1	790	manto

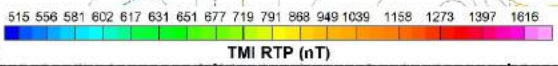
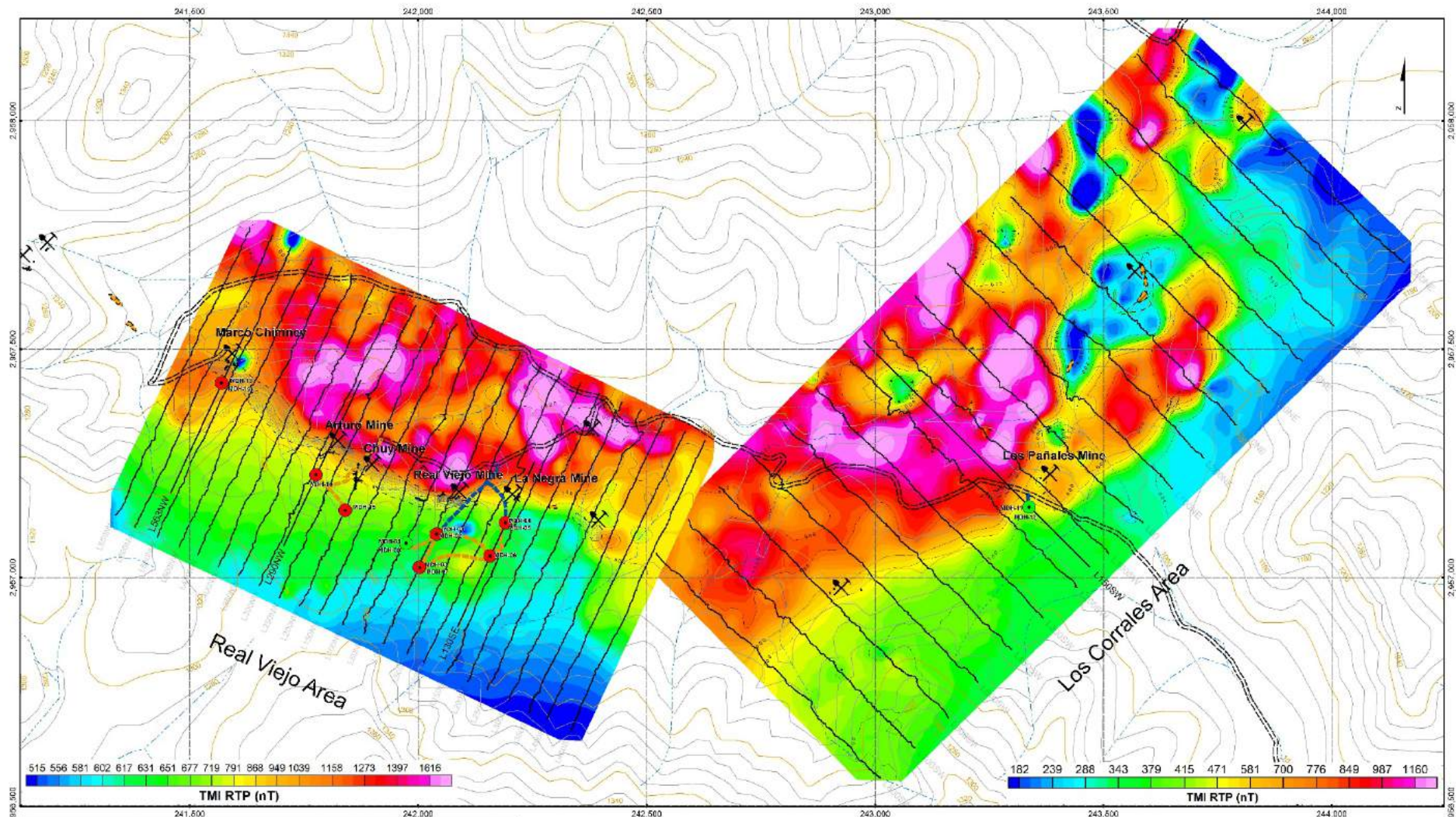
Average grade of all surface breccia veins and mantos sampled at RV, representing 69 samples, was **148 g/t Ag and 5.5% Zn+Pb** (454 g/t AgEq or 7.5% ZnEq)

Corrales | recent surface sampling

Select results from 2018 surface sampling program

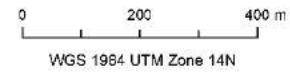
SAMPLE	WIDTH (M)	AU G/T	AG G/T	CU %	AUEQ g/t*	AGEQ G/T*	CUEQ %*	MINZ. TYPE
223806	0.4	1.0	19.7	1.7	3.8	329	2.4	breccia
223839	1.6	0.6	4.0	0.3	1.1	95	0.7	skarn/breccia
223807	0.5	0.6	5.7	0.8	1.9	165	1.2	skarn/breccia
223837	0.9	0.6	14.1	0.6	1.5	130	0.9	skarn/breccia
223835	0.9	0.5	9.6	0.7	1.6	139	1.0	skarn/breccia
223838	0.5	0.0	1.5	0.2	0.3	26	0.2	intrusive/fault

Real Viejo/Corrales | total mag RTP



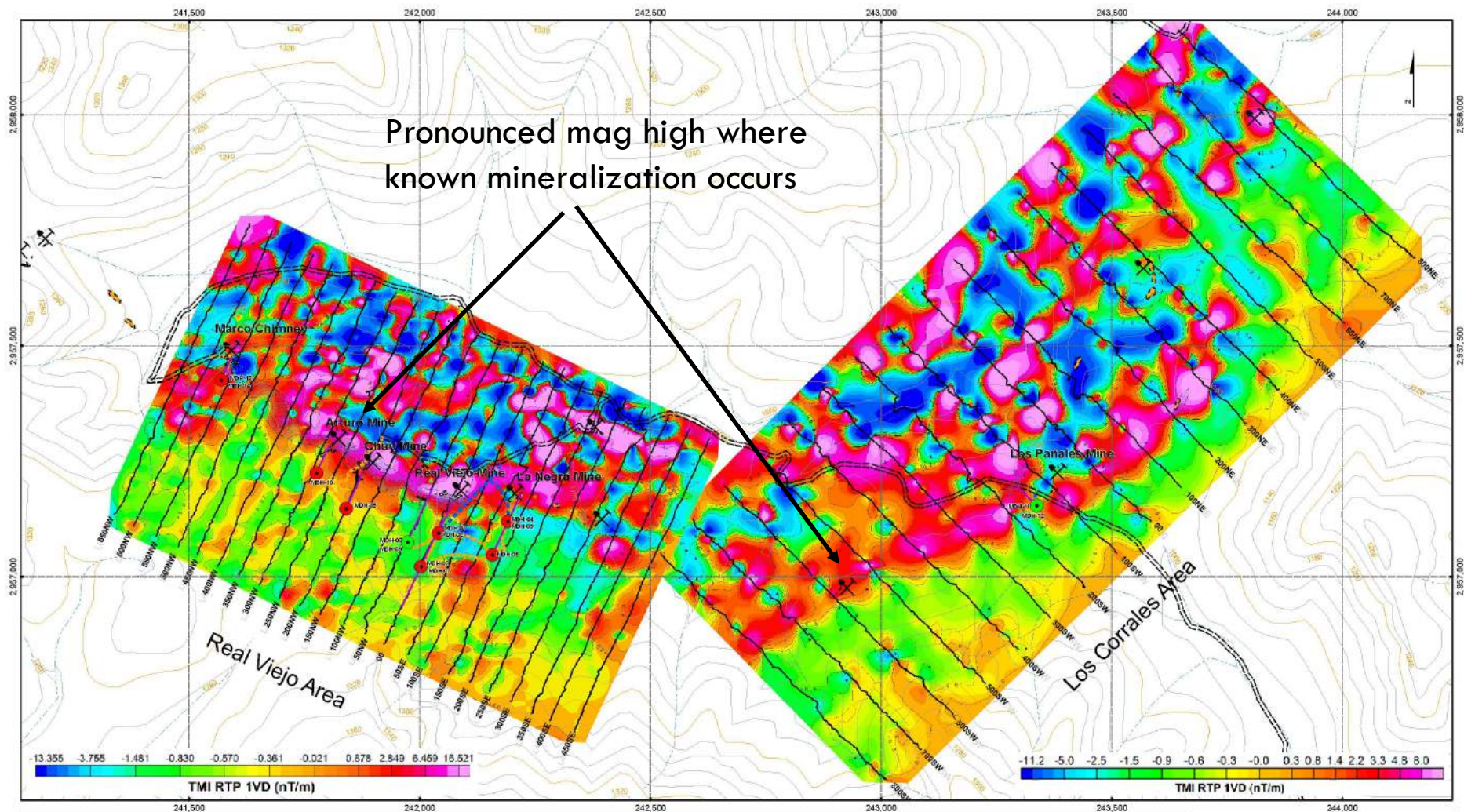
Roads	Drilling	Alteration	Symbols
Existing Road	Prior_1	Endo Skarn	Mine
New Road	Prior_2	Skarn	Dump
Trail_Proposal	Surface Projection	Recrystallization	

Oct/2018



Discovery Metals
 Monclova Project
 Real Viejo-Los Corrales
 Total Magnetic Intensity RTP

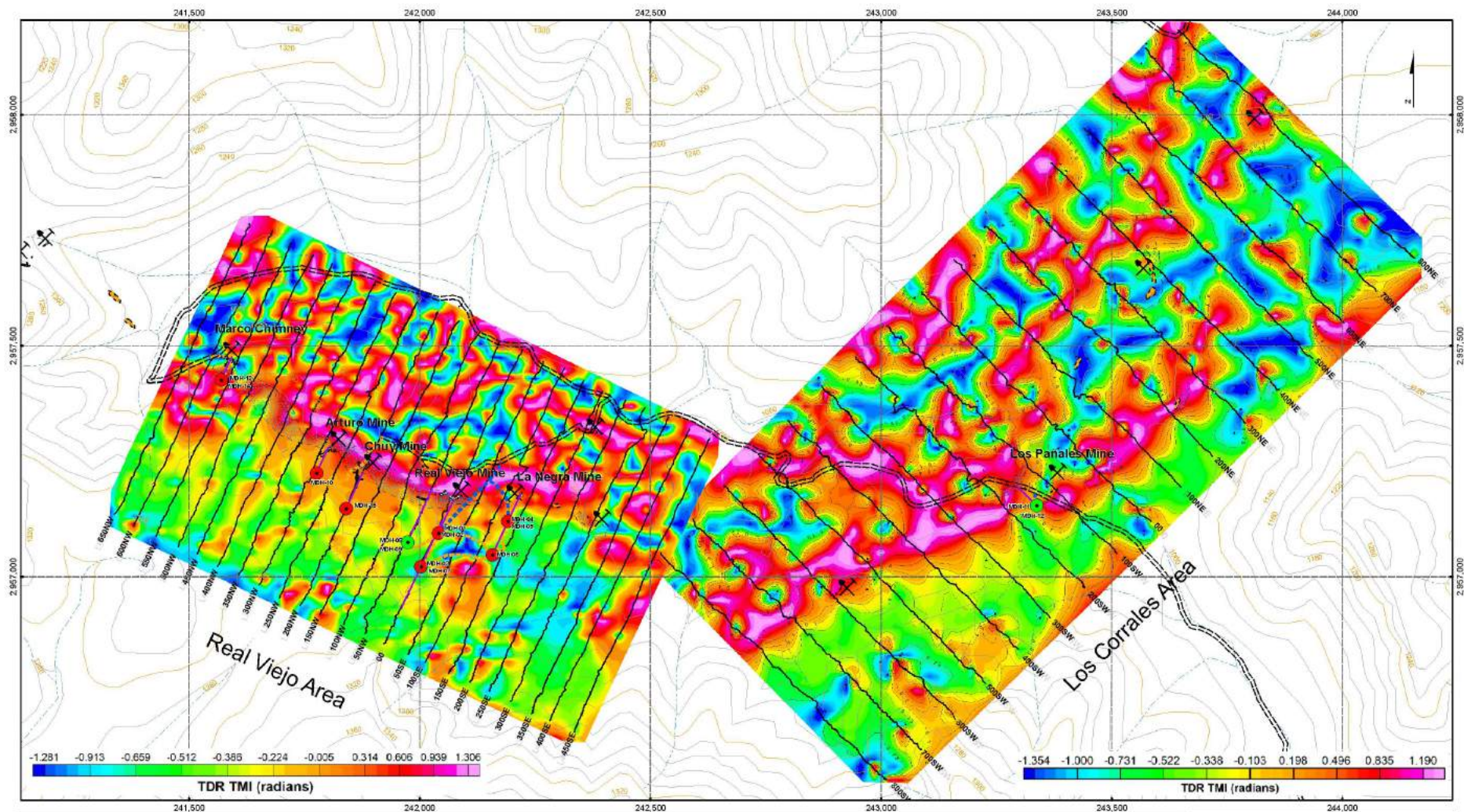
Real Viejo/Corrales | 1st vert. derivative RTP



DiscoveryMetals

Monclova Project
 Real Viejo-Los Corrales
 Calculated 1st Vertical Derivative
 of the RTP Magnetic Field

Real Viejo/Corrales | TMI tilt derivative

**Roads**

- Existing Road
- New Road
- Trail_Proposed

Drilling

- Prior_1
- Prior_2
- Surface Projection

Alteration

- Endo Skarn
- Skarn
- Recrystallization

Symbols

- Mine
- Mine Shaft
- Dump

0 200 400 m

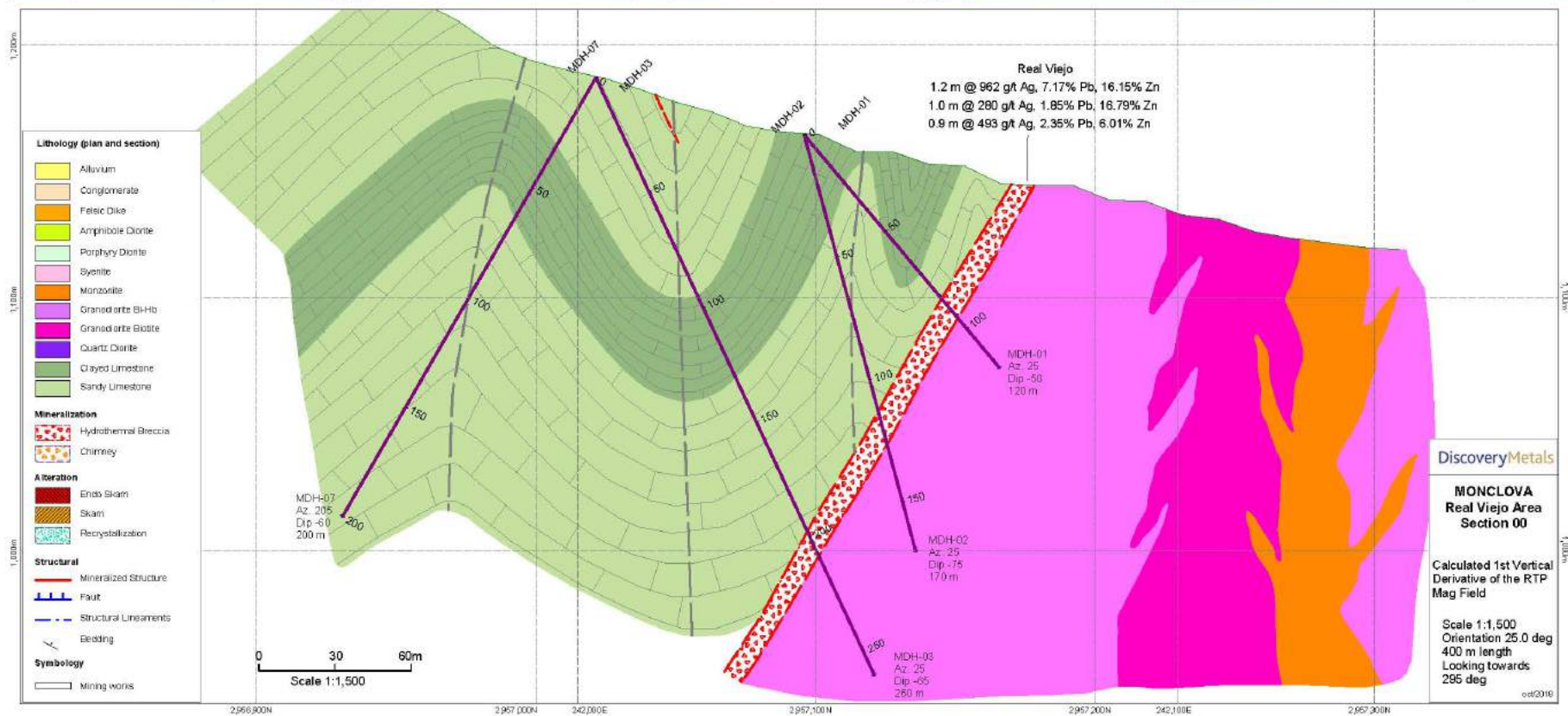
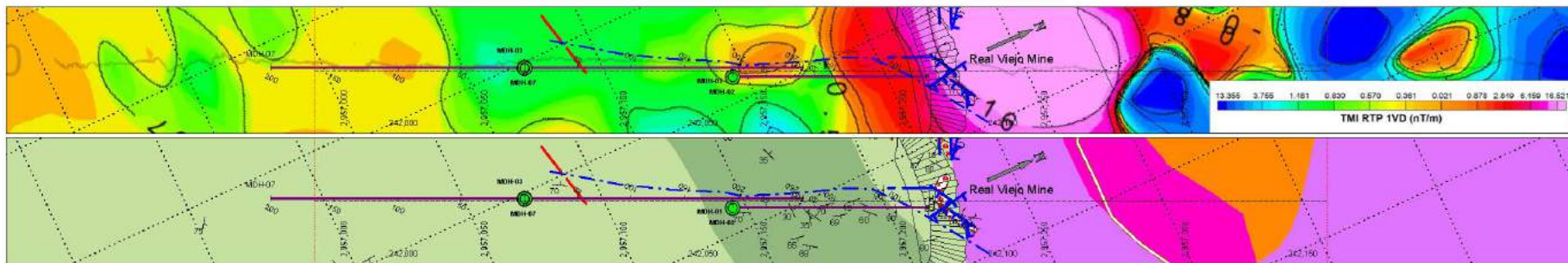
WGS 1984 UTM Zone 14N

DiscoveryMetals

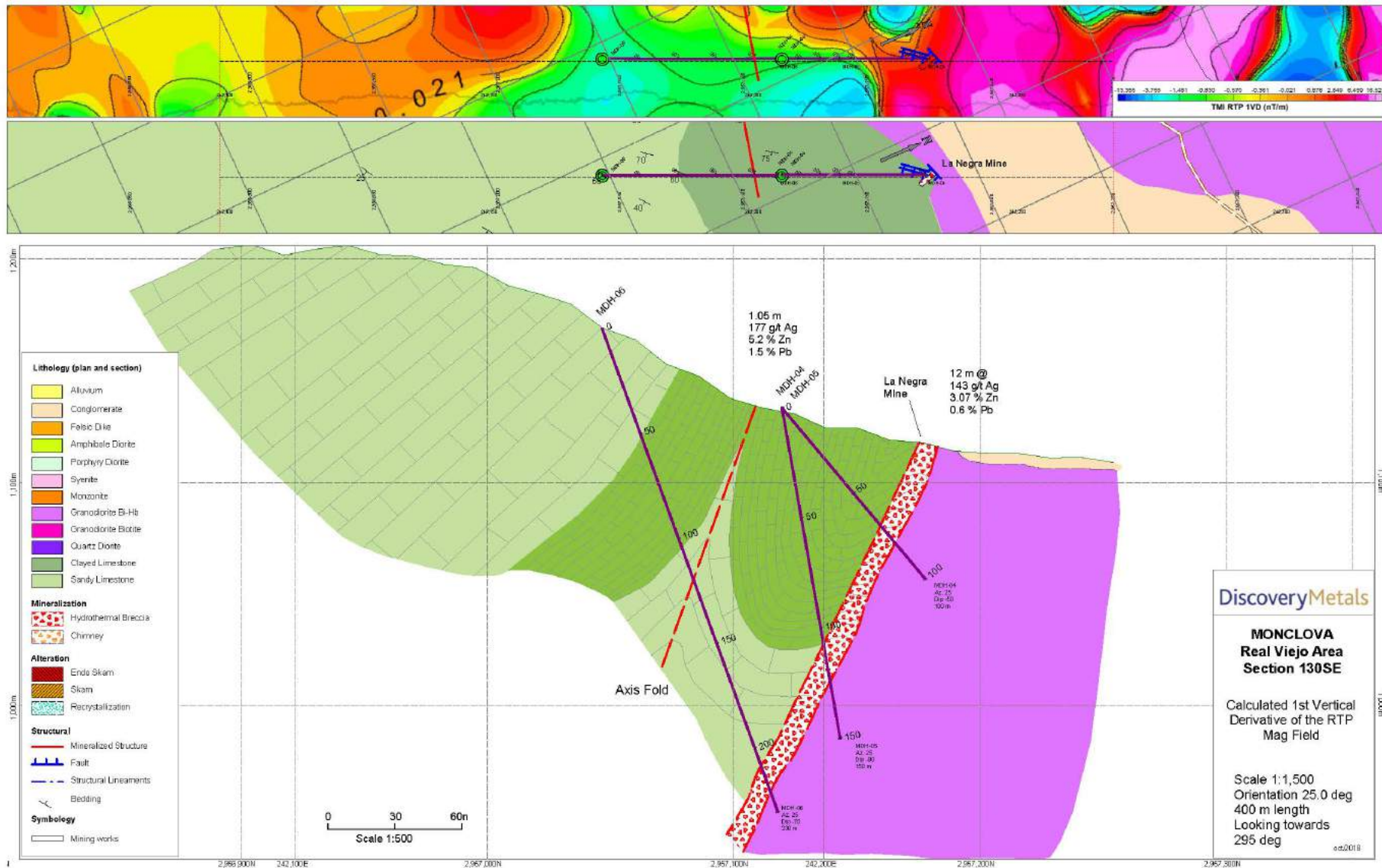
Monclova Project
Real Viejo-Los Corrales

Tilt Derivative of TMI

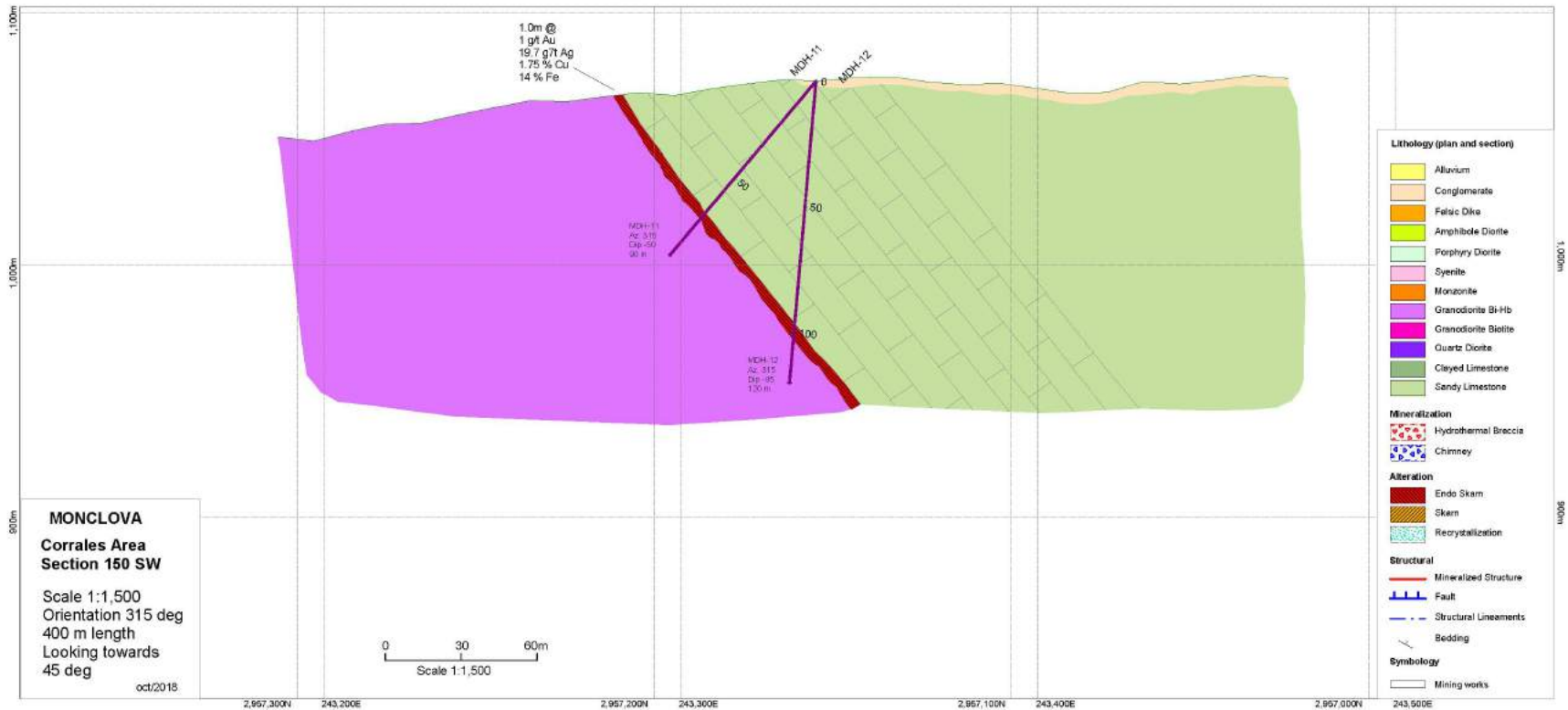
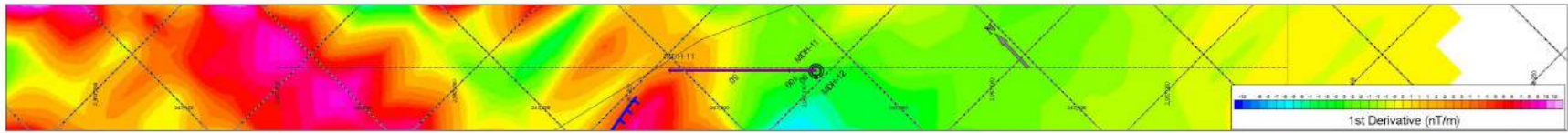
Real Viejo | Section 00 (Real Viejo Mine)



Real Viejo | Section 130 SE (La Negra Mine)



Corrales | Section 150 SW

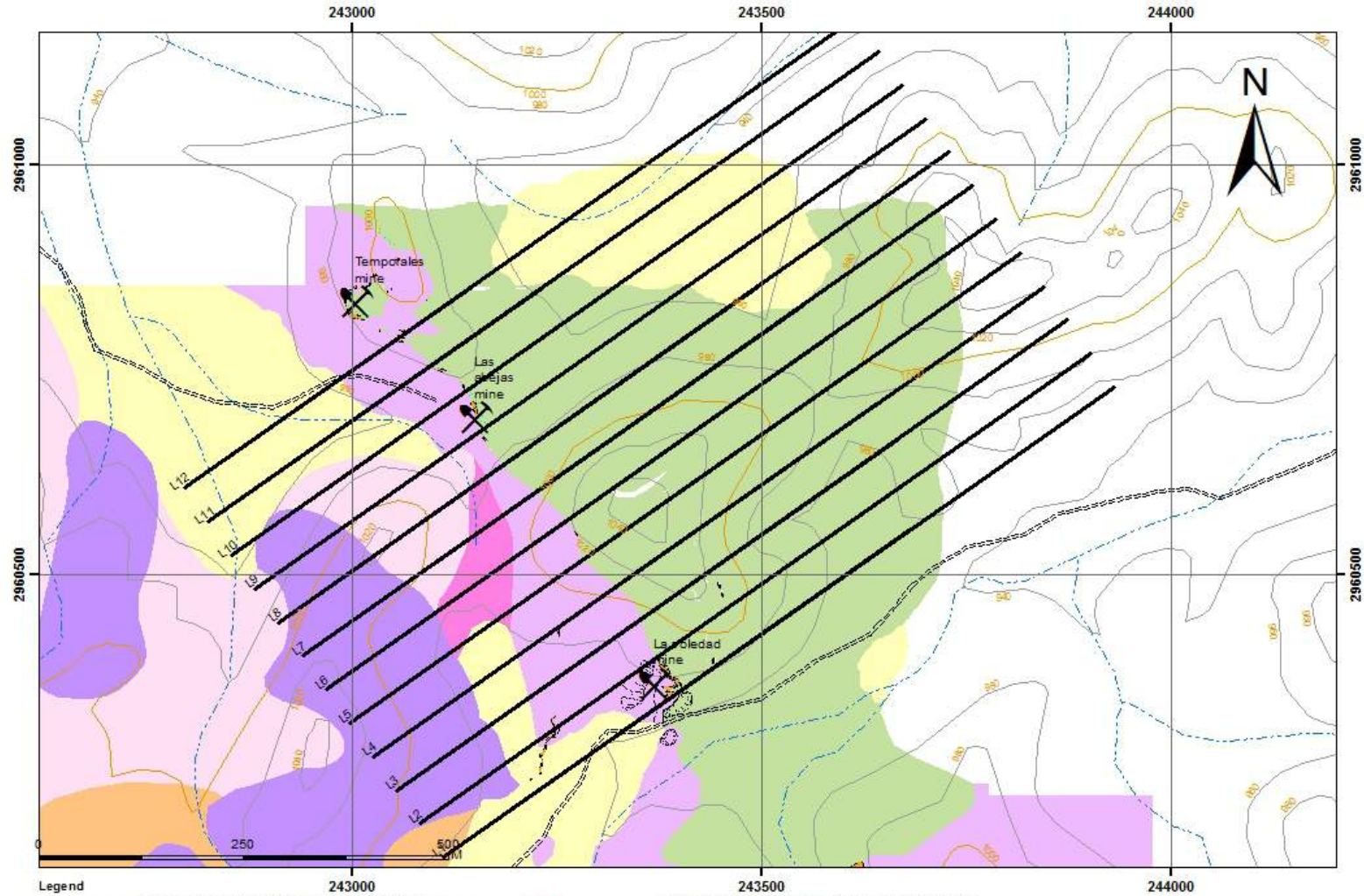


Soledad | recent surface sampling

Select results from 2018 surface sampling program

SAMPLE	WIDTH (M)	AU G/T	AG G/T	CU %	AUEQ G/T*	AGEQ G/T*	CUEQ %*	MINZ. TYPE
223533	1.5	7.8	39.0	6.9	18.7	1621	11.8	skarn
223511	1.0	2.8	3.0	2.7	7.0	607	4.4	skarn
253038	Dump	2.1	12.2	2.1	5.4	468	3.4	skarn
253039	Dump	1.6	7.0	1.9	4.5	390	2.8	skarn
223513	1.0	1.3	2.0	1.6	3.8	329	2.4	skarn
223512	1.0	0.8	2.0	0.6	1.8	156	1.1	skarn
223520	1.0	0.6	3.0	1.5	2.9	251	1.9	skarn
223510	1.0	0.4	2.0	0.7	1.5	130	0.9	skarn

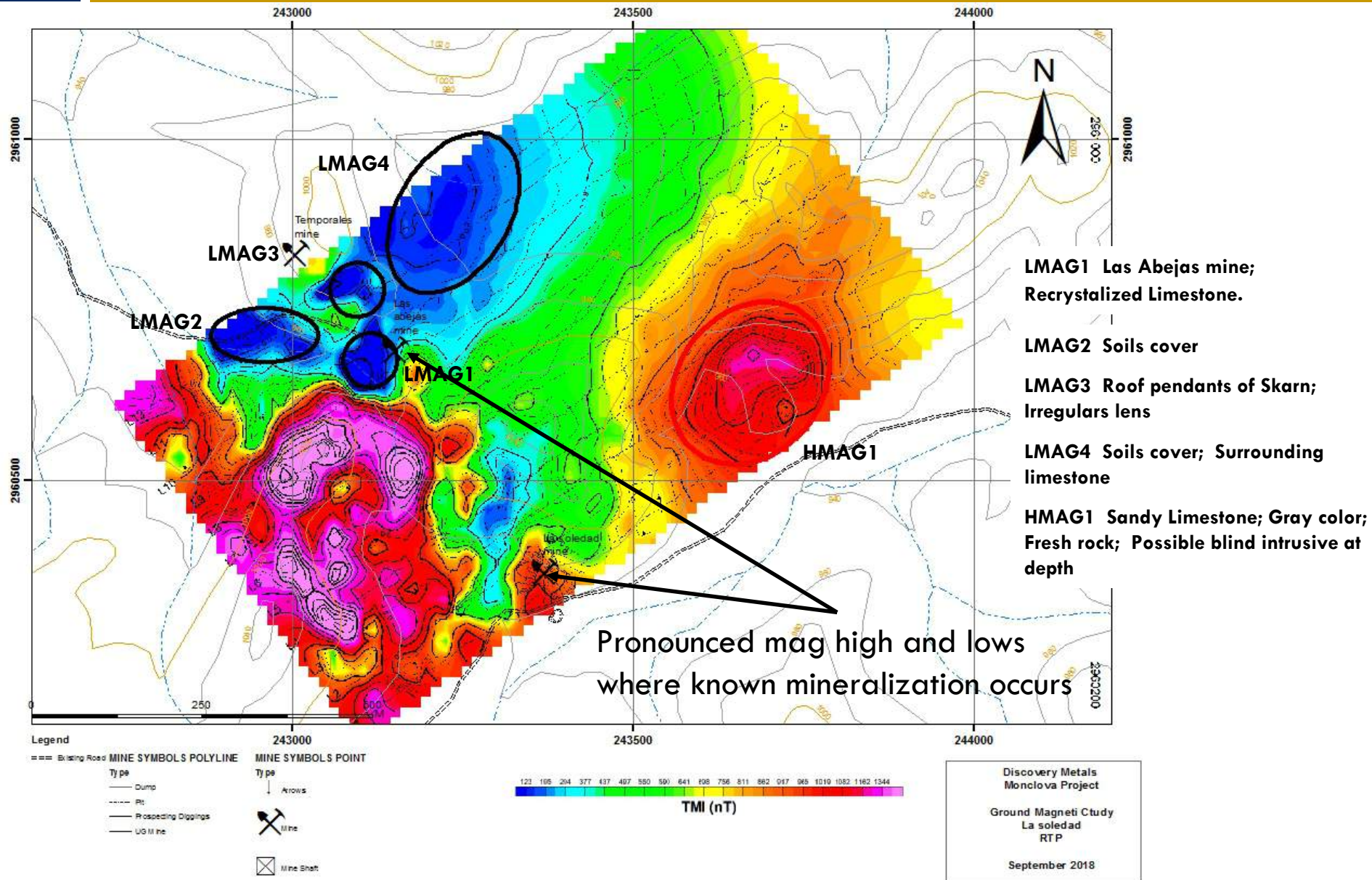
Soledad | mag grid



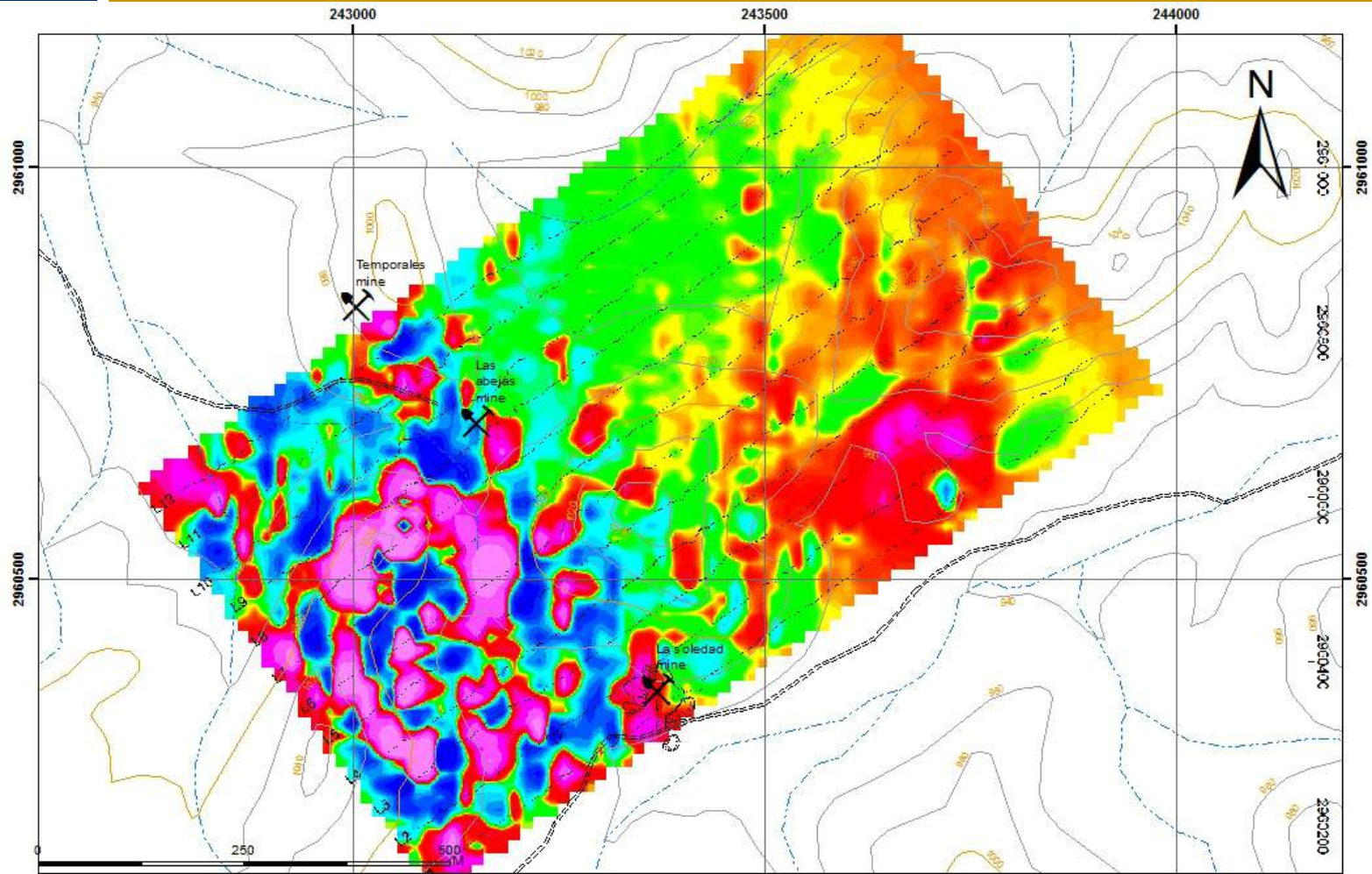
Legend		LITHOLOGY POLYGON		MINE SYMBOLS POLYLINE		MINE SYMBOLS POINT	
Existing Road	ALTERATION POLYGON	Granite	Granodiorite Biotite	Dump	Arrows	Mine	
Trail, Proposal	Skarn	Monzonite	Quartz Diorite	Pit	Mine	Mine Shaft	
New Road	Skarn	Conglomerate	Black Limestone	Prospecting Dippings			
	Red crystallization	Felsic Dike	Limestone	UG Mine			
	Skarn	Amphibole Diorite					
	Red crystallization	Porphyry Diorite					
		Granite					
		Felsic Dike					
		Amphibole Diorite					
		Porphyry Diorite					
		Alluvium					
		Felsic Dike					
		Amphibole Diorite					
		Porphyry Diorite					
		Granite					
		Monzonite					
		Conglomerate					
		Syenite					
		Quartz Monzonite					

Discovery Metals
 Monclova Project
 Geologic Map
 La Soledad
 September 2018

Soledad | total mag RTP

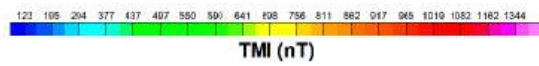


Soledad | RTP 1st vertical derivative



First Vertical Derivative

- Legend**
- == Existing Road
 - MINE SYMBOLS POLYLINE
 - MINE SYMBOLS POINT
 - Type
 - Dump
 - Pit
 - Prospecting Dippings
 - UG Mine
 - Arrows
 - Mine
 - Mine Shaft



Discovery Metals
 Monclova Project
 Ground Magneti Ctudy
 La soledad
 First derivate
 September 2018