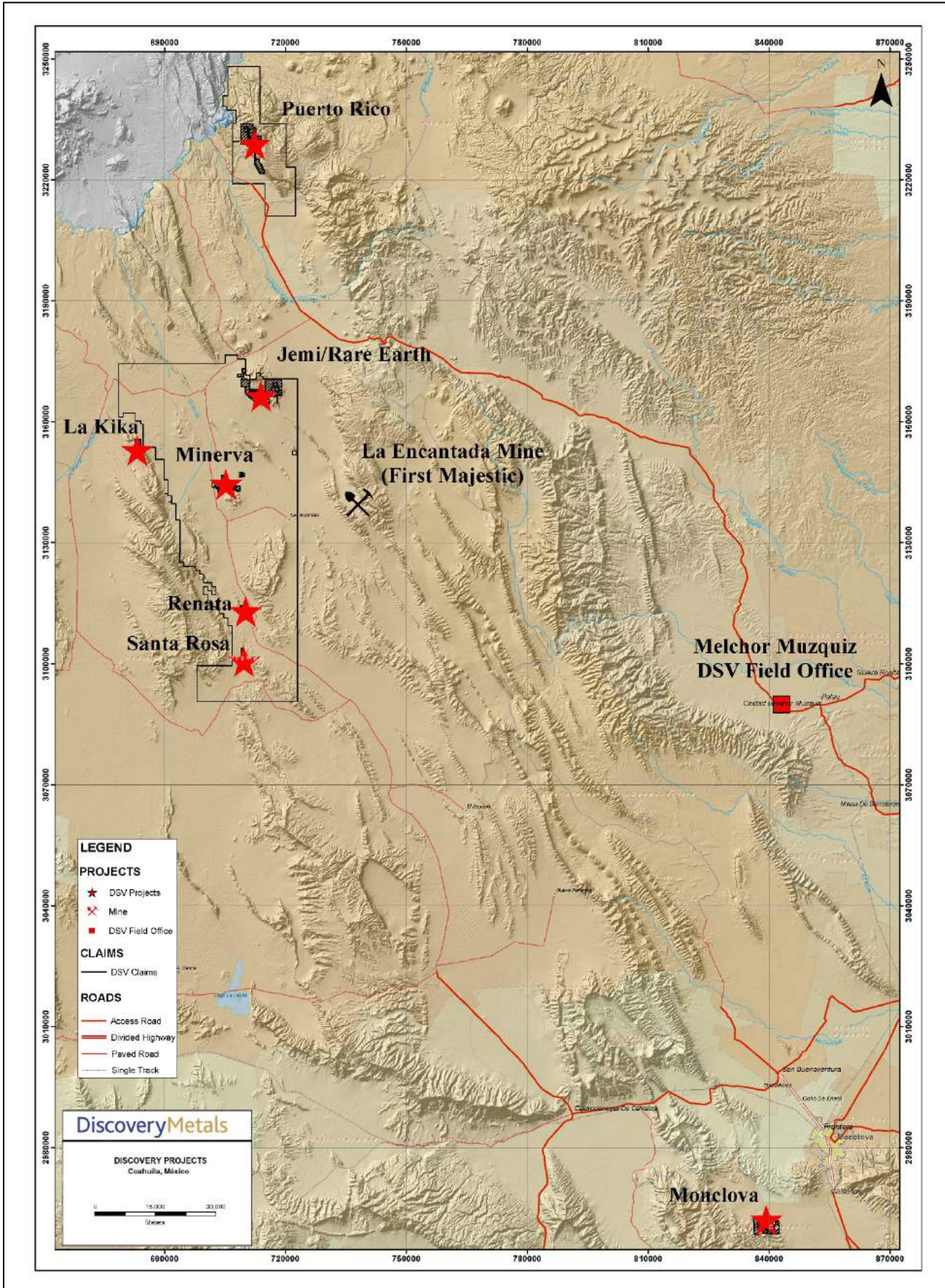
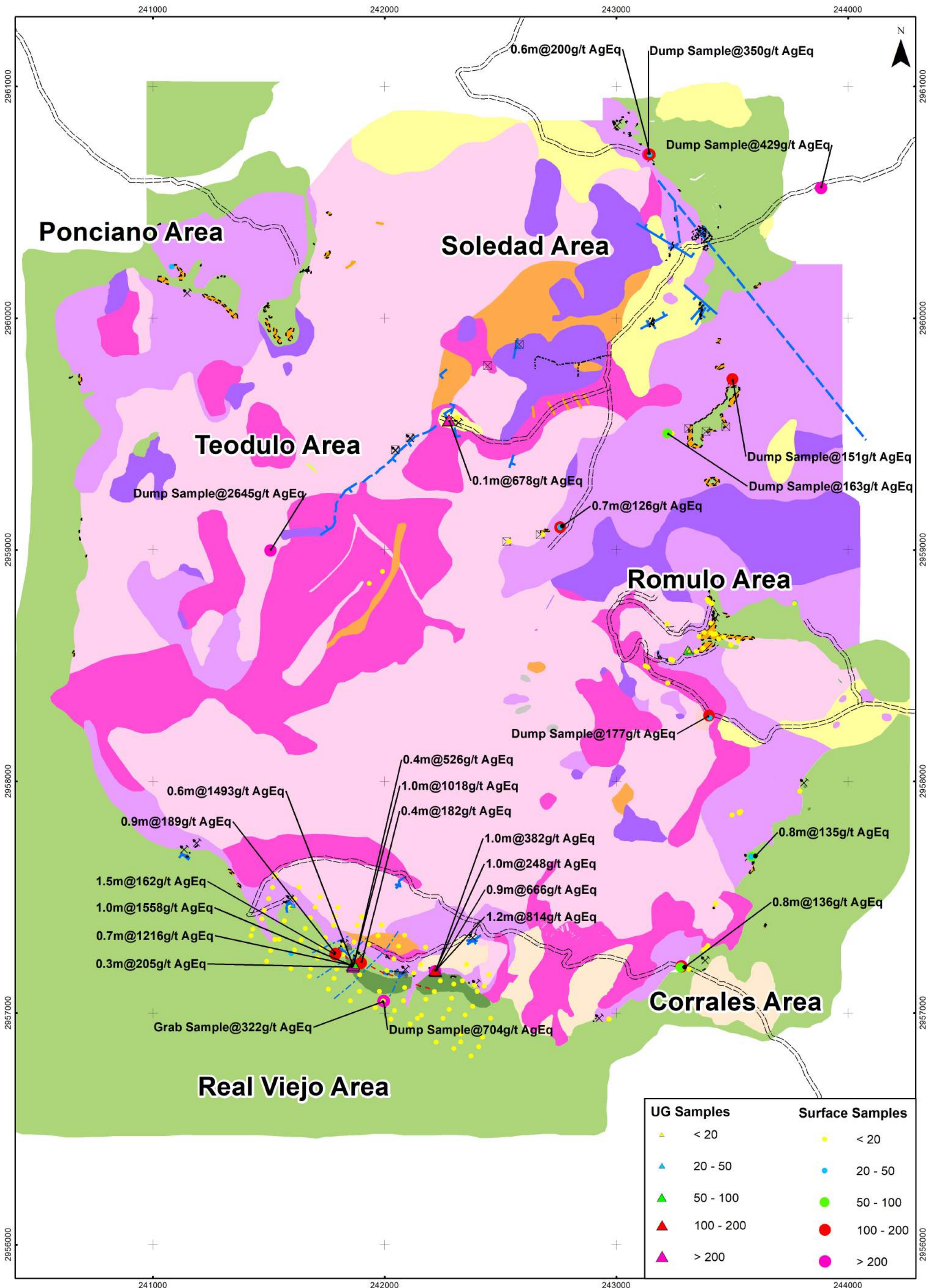


Discovery Metals (DSV) Project locations | Northern Coahuila, Mexico





Lithology

Yellow	Alluvium	Pink	Syenite
Light Green	Amphibole Diorite	Light Orange	Quartz Monzonite
Light Blue	Porphyry Diorite	Dark Pink	Granodiorite Biotite
Grey	Granite	Light Purple	Fine Grain Granodiorite
Dark Green	Porphyry Rhyolite	Dark Purple	Quartz Diorite
Orange	Monzonite	Dark Green	Clayed Limestone
Light Orange	Conglomerate	Light Green	Sandy Limestone

Alteration

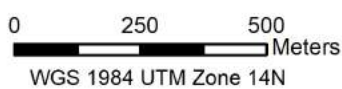
Red Hatched	Endo Skarn
Orange Hatched	Skarn
Red Hatched with Circles	Hydrothermal Breccia
Orange Hatched with Circles	Chimney

Structural

Red Dashed Line	Min Structure
Blue Solid Line	Certain Fault
Blue Dashed Line	Inferred Fault
Blue Dotted Line	Struct. Line

Symbols

Black Dashed Line	Roads
Black X	Mine
Black X with Square	Mine Shaft
Black Oval with Hatching	Dump



Discoverymetals

Monclova Project

Geochem AgEq g/t

SAMPLE ID	LOCATION	PROSPECT	AREA	EAST	NORTH	ELEVATION	SAMPLE TYPE	WIDTH (m)	MINERALIZATION STYLE	Ag g/t	Au g/t	Cu %	Pb %	Zn %	Ag Eq g/t
223829	Surface	Real Viejo	La Negra mine	242217	2957180	1129	Channel	1.0	BRECCIA	57	0.0	0.02	0.3	2.9	248
223830	Surface	Real Viejo	Los Corrales	242388	2957121	1100	Channel	0.6	SKARN TYPE	0	0.0	0.02	0.0	0.0	4
223831	Surface	Real Viejo	Los Corrales	242388	2957121	1100	Channel	1.2	SKARN TYPE	0	0.0	0.01	0.0	0.0	2
223832	Surface	Corrales Area	Los Corrales	242968	2956974	1116	Channel	0.8	LIMESTONE	0	0.0	0.00	0.0	0.0	1
223833	Surface	Corrales Area	Los Corrales	242969	2956975	1116	Channel	0.9	SKARN TYPE	0	0.0	0.00	0.0	0.0	1
223834	Surface	Corrales Area	Los Corrales	242969	2956974	1116	Channel	0.9	ENDOSKARN TYPE	0	0.0	0.00	0.0	0.0	1
223835	Surface	Corrales Area	Los Corrales	243278	2957197	1075	Channel	0.9	BRECCIA	10	0.5	0.70	0.0	0.0	136
223836	Surface	Corrales Area	Los Corrales	243588	2957675	1072	Channel	1.8	ENDOSKARN TYPE	1	0.0	0.05	0.0	0.0	11
223837	Surface	Corrales Area	Los Corrales	243585	2957675	1072	Channel	0.9	ENDOSKARN TYPE	14	0.6	0.58	0.0	0.1	136
223838	Surface	Corrales Area	Los Corrales	243583	2957675	1072	Channel	0.5	INTRUSIVE	2	0.0	0.16	0.0	0.1	25
223839	Surface	Corrales Area	Los Corrales	243583	2957676	1072	Channel	1.6	ENDOSKARN TYPE	4	0.6	0.30	0.0	0.1	89
223840	Surface	Corrales Area	Los Corrales	243429	2957473	1045	Channel	0.9	SKARN TYPE	0	0.0	0.01	0.0	0.0	2
223841	Surface	Corrales Area	Los Corrales	243530	2957868	1007	Channel	1.9	BRECCIA	0	0.0	0.01	0.0	0.0	2
223842	Surface	Corrales Area	Los Corrales	243532	2957864	1007	Channel	1.0	ENDOSKARN TYPE	0	0.0	0.00	0.0	0.0	1
223843	Surface	Corrales Area	Los Corrales	243536	2957870	1007	Channel	1.1	ENDOSKARN TYPE	0	0.0	0.00	0.0	0.0	1
223845	Surface	Corrales Area	Los Corrales	243538	2957870	1007	Channel	1.0	ENDOSKARN TYPE	0	0.0	0.00	0.0	0.0	4
223846	Surface	Corrales Area	Los Corrales	243792	2957958	1020	Channel	1.1	INTRUSIVE	0	0.0	0.02	0.0	0.0	4
223847	Surface	Corrales Area	Los Corrales	243792	2957959	1020	Channel	1.6	ENDOSKARN TYPE	0	0.1	0.09	0.0	0.0	17
223848	Surface	Corrales Area	Los Corrales	243378	2957274	1051	Channel	0.7	INTRUSIVE	0	0.0	0.00	0.0	0.0	1
223849	Surface	Corrales Area	Los Corrales	243389	2957283	1051	Channel	1.1	INTRUSIVE	0	0.0	0.01	0.0	0.0	2
223850	Surface	Corrales Area	Los Corrales	243396	2957292	1051	Channel	1.2	ENDOSKARN TYPE	0	0.0	0.00	0.0	0.0	1
223852	Surface	Corrales Area	Los Corrales	243500	2957855	1018	Channel	-	SKARN TYPE	0	0.0	0.00	0.0	0.0	1
223853	Surface	Romulo	Romulo mines	243234	2958527	1085	Channel	1.25	ENDOSKARN TYPE	0	0.0	0.01	0.0	0.0	3
223854	Surface	Romulo	Romulo mines	243235	2958528	1085	Channel	1.25	ENDOSKARN TYPE	0	0.0	0.00	0.0	0.0	1
223855	Surface	Romulo	Romulo mines	243236	2958528	1085	Channel	1.45	ENDOSKARN TYPE	0	0.0	0.00	0.0	0.0	1
223856	Surface	Romulo	Romulo mines	243236	2958529	1085	Channel	0.9	ENDOSKARN TYPE	0	0.0	0.00	0.0	0.0	1
223857	Surface	Romulo	Romulo mines	243246	2958522	1085	Channel	0.45	ENDOSKARN TYPE	0	0.1	0.09	0.0	0.0	20
223858	Surface	Romulo	Romulo mines	243347	2958561	1094	Channel	1.2	ENDOSKARN TYPE	0	0.0	0.00	0.0	0.0	1
223859	Surface	Romulo	Romulo mines	243375	2958575	1095	Channel	1.05	ENDOSKARN TYPE	0	0.0	0.00	0.0	0.0	1
223861	Surface	Romulo	Romulo mines	243357	2958627	1131	Channel	1	ENDOSKARN TYPE	0	0.0	0.00	0.0	0.0	1
223862	Surface	Romulo	Romulo mines	243380	2958644	1126	Channel	0.9	ENDOSKARN TYPE	0	0.0	0.00	0.0	0.0	1
223863	Surface	Romulo	Romulo mines	243409	2958641	1102	Channel	0.9	ENDOSKARN TYPE	0	0.0	0.00	0.0	0.0	1
223864	Surface	Romulo	Romulo mines	243442	2958616	1088	Channel	1	SKARN TYPE	0	0.0	0.00	0.0	0.0	1
223865	Surface	Romulo	Romulo mines	243345	2958562	1094	Channel	1	EPITHERMAL QUARTZ VEIN	1	0.0	0.00	0.0	0.0	2
223868	Surface	Romulo	Romulo mines	243527	2958607	1056	Channel	1.6	ENDOSKARN TYPE	0	0.0	0.00	0.0	0.0	1
223869	Surface	Romulo	Romulo mines	243220	2958680	1109	Channel	0.6	SKARN TYPE	0	0.0	0.01	0.0	0.0	2
223889	Surface	Romulo	Romulo mines	243408	2958684	1112	Channel	0.9	ENDOSKARN TYPE	0	0.0	0.01	0.0	0.0	3
223891	Surface	Romulo	Romulo mines	243417	2958635	1100	Channel	0.7	ENDOSKARN TYPE	0	0.0	0.00	0.0	0.0	1
223892	Surface	Romulo	Romulo mines	243428	2958638	1097	Channel	0.6	ENDOSKARN TYPE	0	0.0	0.00	0.0	0.0	1
223893	Surface	Romulo	Romulo mines	243465	2958624	1081	Channel	0.6	ENDOSKARN TYPE	0	0.0	0.00	0.0	0.0	1
223894	Surface	Romulo	Romulo mines	243772	2958771	1067	Channel	0.9	INTRUSIVE	0	0.0	0.03	0.0	0.0	6
223895	Surface	Romulo	Romulo mines	243772	2958770	1067	Channel	0.8	INTRUSIVE	1	0.0	0.19	0.0	0.0	28
223896	Surface	Romulo	Romulo mines	243771	2958769	1067	Channel	0.4	EPITHERMAL QUARTZ VEIN	1	0.2	0.15	0.0	0.0	33
223897	Surface	Romulo	Romulo mines	243770	2958769	1067	Channel	0.45	SKARN TYPE	0	0.0	0.00	0.0	0.0	1
223899	Surface	Romulo	Romulo mines	243770	2958769	1067	Channel	1	INTRUSIVE	1	0.1	0.16	0.0	0.0	25
223900	Surface	Romulo	Romulo mines	243769	2958768	1067	Channel	1	INTRUSIVE	0	0.0	0.11	0.0	0.0	16
223901	Surface	Romulo	Romulo mines	243495	2958589	1063	Channel	0.6	ENDOSKARN TYPE	0	0.0	0.01	0.0	0.0	2
223902	Surface	Romulo	Romulo mines	243495	2958590	1063	Channel	0.6	ENDOSKARN TYPE	0	0.0	0.01	0.0	0.0	1
223905	Surface	Real Viejo	section 6 Real del Viejo	241960	2957025	1213	Channel	0.6	LIMESTONE	0	0.0	0.00	0.0	0.0	1
223906	Surface	Real Viejo	section 6 Real del Viejo	241995	2957051	1190	Dump		MANTO	418	0.0	0.23	1.3	3.4	704
223907	Surface	Real Viejo	section 6 Real del Viejo	241978	2957094	1198	Channel	0.6	LIMESTONE	0	0.0	0.00	0.0	0.0	1
223908	Surface	Real Viejo	section 6 Real del Viejo	291991	2957170	1184	Channel	0.4	LIMESTONE	12	0.0	0.00	0.1	0.1	18
223909	Surface	Real Viejo	section 6 Real del Viejo	242010	2957184	1176	Channel	1	LIMESTONE	0	0.0	0.00	0.0	0.0	1
223910	Surface	Real Viejo	section 6 Real del Viejo	242040	2957235	1152	Channel	0.7	INTRUSIVE	0	0.0	0.00	0.0	0.0	1
223911	Surface	Real Viejo	section 6 Real del Viejo	242061	2957289	1136	Channel	0.7	INTRUSIVE	0	0.0	0.00	0.0	0.0	1
223912	Surface	Real Viejo	section 6 Real del Viejo	242086	2957336	1123	Channel	0.5	INTRUSIVE	0	0.0	0.00	0.0	0.0	1
223913	Surface	Real Viejo	section 7 Real del Viejo	241852	2957053	1263	Channel	1.1	LIMESTONE	0	0.0	0.00	0.0	0.0	1
223915	Surface	Real Viejo	section 7 Real del Viejo	241892	2957094	1230	Channel	0.4	LIMESTONE	1	0.0	0.00	0.0	0.1	6
223916	Surface	Real Viejo	section 7 Real del Viejo	241893	2957166	1198	Channel	0.4	LIMESTONE	0	0.0	0.00	0.0	0.0	1
223917	Surface	Real Viejo	section 7 Real del Viejo	241887	2957202	1200	Channel	0.6	LIMESTONE	0	0.0	0.00	0.0	0.1	4
223918	Surface	Real Viejo	section 7 Real del Viejo	241899	2957216	1191	Channel	0.45	LIMESTONE	66	0.0	0.15	0.9	1.0	182
223919	Surface	Real Viejo	section 7 Real del Viejo	241932	2957297	1184	Channel	0.55	INTRUSIVE	0	0.0	0.00	0.0	0.0	1
223920	Surface	Real Viejo	section 7 Real del Viejo	241972	2957334	1145	Channel	0.5	INTRUSIVE	0	0.0	0.00	0.0	0.0	1
223921	Surface	Real Viejo	section 7 Real del Viejo	241987	2957381	1159	Channel	0.75	LIMESTONE	0	0.0	0.00	0.0	0.0	1
223922	Surface	Real Viejo	section 8 Real del Viejo	241757	2957104	1293	Channel	0.3	LIMESTONE	0	0.0	0.00	0.0	0.0	1
223923	Surface	Real Viejo	section 8 Real del Viejo	241782	2957150	1276	Channel	0.5	LIMESTONE	0	0.0	0.00	0.0	0.0	1
223925	Surface	Real Viejo	section 8 Real del Viejo	241793	2957191	1242	Channel	0.25	LIMESTONE	0	0.0	0.00	0.0	0.0	1
223926	Surface	Real Viejo	section 8 Real del Viejo	241821	2957253	1213	Channel	1.2	LIMESTONE	0	0.0	0.00	0.0	0.0	2
223927	Surface	Real Viejo	section 8 Real del Viejo	241824	2957296	1198	Channel	0.6	LIMESTONE	0	0.0	0.00	0.0	0.0	1
223928	Surface	Real Viejo	section 8 Real del Viejo	241868	2957307	1181	Channel	0.7	INTRUSIVE	0	0.0	0.00	0.0	0.0	1
223929	Surface	Real Viejo	section 8 Real del Viejo	241884	2957380	1189	Channel	0.7	INTRUSIVE	0	0.0	0.00	0.0	0.0	1

SAMPLE ID	LOCATION	PROSPECT	AREA	EAST	NORTH	ELEVATION	SAMPLE TYPE	WIDTH (m)	MINERALIZATION STYLE	Ag g/t	Au g/t	Cu %	Pb %	Zn %	Ag Eq g/t
223930	Surface	Real Viejo	section 8 Real del Viejo	241902	2957417	1206	Channel	0.9	INTRUSIVE	0	0.0	0.00	0.0	0.0	1
223931	Surface	Real Viejo	section 9 Real del Viejo	241676	2957159	1317	Channel	0.9	LIMESTONE	0	0.0	0.00	0.0	0.0	0
223933	Surface	Real Viejo	section 9 Real del Viejo	241682	2957193	1311	Channel	0.4	LIMESTONE	0	0.0	0.00	0.0	0.0	1
223934	Surface	Real Viejo	section 9 Real del Viejo	241710	2957238	1283	Channel	0.3	LIMESTONE	0	0.0	0.00	0.0	0.0	1
223936	Surface	Real Viejo	section 9 Real del Viejo	241726	2957286	1262	Channel	0.5	LIMESTONE	0	0.0	0.00	0.0	0.0	1
223937	Surface	Real Viejo	section 9 Real del Viejo	241744	2957327	1241	Channel	0.5	INTRUSIVE	0	0.0	0.00	0.0	0.0	1
223938	Surface	Real Viejo	section 9 Real del Viejo	241780	2957379	1233	Channel	0.6	INTRUSIVE	0	0.0	0.00	0.0	0.0	1
223939	Surface	Real Viejo	section 9 Real del Viejo	241783	2957418	1227	Channel	0.4	INTRUSIVE	0	0.0	0.00	0.0	0.0	1
223940	Surface	Real Viejo	section 9 Real del Viejo	241800	2957457	1227	Channel	0.4	INTRUSIVE	0	0.0	0.00	0.0	0.0	1
223941	Surface	Real Viejo	section 10 Real del Viejo	241596	2957192	1324	Channel	0.5	LIMESTONE	0	0.0	0.01	0.0	0.0	3
223943	Surface	Real Viejo	section 10 Real del Viejo	241598	2957258	1330	Channel	0.6	LIMESTONE	16	0.0	0.02	0.1	0.0	25
223944	Surface	Real Viejo	section 10 Real del Viejo	241611	2957273	1330	Channel	0.4	LIMESTONE	0	0.0	0.00	0.0	0.0	1
223945	Surface	Real Viejo	section 10 Real del Viejo	241640	2957316	1320	Channel	0.9	LIMESTONE	0	0.0	0.00	0.0	0.0	1
223946	Surface	Real Viejo	section 10 Real del Viejo	241658	2957366	1278	Unknown	0	LIMESTONE	0	0.0	0.00	0.0	0.0	1
223947	Surface	Real Viejo	section 10 Real del Viejo	241680	2957411	1253	Channel	1	INTRUSIVE	0	0.0	0.00	0.0	0.0	1
223948	Surface	Real Viejo	section 10 Real del Viejo	241701	2957457	1230	Channel	1	INTRUSIVE	0	0.0	0.00	0.0	0.0	1
223949	Surface	Real Viejo	section 10 Real del Viejo	241722	2957502	1215	Grab	-	INTRUSIVE	0	0.0	0.00	0.0	0.0	1
223950	Surface	Real Viejo	section 11 Real del Viejo	241491	2957225	1304	Channel	0.4	LIMESTONE	0	0.0	0.00	0.0	0.0	1
223951	Surface	Real Viejo	section 11 Real del Viejo	241508	2957270	1297	Channel	0.6	LIMESTONE	0	0.0	0.00	0.0	0.0	1
223953	Surface	Real Viejo	section 11 Real del Viejo	241526	2957318	1275	Channel	0.3	ND	0	0.0	0.00	0.0	0.0	0
223954	Surface	Real Viejo	section 11 Real del Viejo	241544	2957319	1255	Channel	0.4	LIMESTONE	0	0.0	0.00	0.0	0.0	1
223955	Surface	Real Viejo	section 11 Real del Viejo	241567	2957399	1252	Outcrop	0.5	LIMESTONE	0	0.0	0.00	0.0	0.0	1
223956	Surface	Real Viejo	section 11 Real del Viejo	241593	2957458	1231	Unknown	0.5	ND	0	0.0	0.00	0.0	0.0	0
223957	Surface	Real Viejo	section 11 Real del Viejo	241613	2957493	1221	Channel	0.6	INTRUSIVE	0	0.0	0.00	0.0	0.0	1
223958	Surface	Real Viejo	section 11 Real del Viejo	241631	2957544	1186	Channel	0.5	INTRUSIVE	0	0.0	0.00	0.0	0.0	1
223959	Surface	Real Viejo	section 12 Real del Viejo	241423	2957334	1239	Channel	0.3	LIMESTONE	0	0.0	0.00	0.0	0.0	1
223960	Surface	Real Viejo	section 12 Real del Viejo	241431	2957363	1228	Channel	0.4	LIMESTONE	0	0.0	0.00	0.0	0.0	1
223961	Surface	Real Viejo	section 12 Real del Viejo	241470	2957408	1224	Channel	0.2	LIMESTONE	0	0.0	0.00	0.0	0.0	1
223963	Surface	Real Viejo	section 12 Real del Viejo	241481	2957445	1207	Channel	0.6	INTRUSIVE	0	0.0	0.00	0.0	0.0	1
223964	Surface	Real Viejo	section 12 Real del Viejo	241500	2957494	1197	Channel	0.5	INTRUSIVE	0	0.0	0.00	0.0	0.0	1
223965	Surface	Real Viejo	section 12 Real del Viejo	241517	2957543	1180	Channel	0.4	INTRUSIVE	0	0.0	0.00	0.0	0.0	1
223966	Surface	Real Viejo	section 12 Real del Viejo	241530	2957590	1163	Channel	0.3	INTRUSIVE	0	0.0	0.00	0.0	0.0	1
223967	Surface	Real Viejo	section 12 Real del Viejo	241526	2957597	1160	Channel	0.3	INTRUSIVE	0	0.0	0.00	0.0	0.0	1
223969	Surface	Real Viejo	Section 1 Real del Viejo	242373	2956815	1177	Unknown	0.45	ND	0	0.0	0.00	0.0	0.0	1
223970	Surface	Real Viejo	Section 1 Real del Viejo	242406	2956855	1157	Outcrop	0.55	ND	0	0.0	0.00	0.0	0.0	0
223971	Surface	Real Viejo	Section 1 Real del Viejo	242423	2956896	1148	Unknown	0.4	ND	0	0.0	0.00	0.0	0.0	0
223973	Surface	Real Viejo	Section 1 Real del Viejo	242458	2956978	1129	Unknown	0.9	LIMESTONE	0	0.0	0.00	0.0	0.0	1
223974	Surface	Real Viejo	Section 2 Real del Viejo	242299	2956847	1167	Outcrop	0.3	LIMESTONE	0	0.0	0.00	0.0	0.0	1
223975	Surface	Real Viejo	Section 2 Real del Viejo	242328	2956876	1147	Outcrop	0.15	LIMESTONE	0	0.0	0.00	0.0	0.0	1
223976	Surface	Real Viejo	Section 2 Real del Viejo	242329	2956910	1146	Outcrop	1	LIMESTONE	0	0.0	0.00	0.0	0.0	1
223977	Surface	Real Viejo	Section 2 Real del Viejo	242347	2956992	1138	Grab	0	LIMESTONE	0	0.0	0.00	0.0	0.0	1
223978	Surface	Real Viejo	Section 2 Real del Viejo	242381	2957029	1128	Grab	0	LIMESTONE	0	0.0	0.00	0.0	0.0	1
223979	Surface	Real Viejo	Section 2 Real del Viejo	242400	2957094	1118	Unknown	0.4	LIMESTONE	0	0.0	0.00	0.0	0.1	5
223980	Surface	Real Viejo	Section 2 Real del Viejo	242430	2957117	1124	Grab	0	INTRUSIVE	0	0.0	0.00	0.0	0.0	1
223981	Surface	Real Viejo	Section 2 Real del Viejo	242451	2957167	1112	Channel	0.4	INTRUSIVE	0	0.0	0.00	0.0	0.0	1
223983	Surface	Real Viejo	Section 3 Real del viejo	242354	2957210	1101	Channel	0.4	INTRUSIVE	0	0.0	0.00	0.0	0.0	1
223984	Surface	Real Viejo	Section 3 Real del viejo	242336	2957140	1108	Channel	0.4	LIMESTONE	0	0.0	0.00	0.0	0.0	2
223985	Surface	Real Viejo	Section 3 Real del viejo	242299	2957126	1115	Channel	0.5	LIMESTONE	0	0.0	0.00	0.0	0.1	4
223986	Surface	Real Viejo	Section 3 Real del viejo	242289	2957065	1134	Channel	0.4	LIMESTONE	0	0.0	0.00	0.0	0.0	1
223987	Surface	Real Viejo	Section 3 Real del viejo	242279	2957016	1142	Channel	0.5	LIMESTONE	0	0.0	0.00	0.0	0.0	1
223988	Surface	Real Viejo	Section 3 Real del viejo	242252	2956978	1163	Channel	0.35	LIMESTONE	0	0.0	0.00	0.0	0.0	1
223989	Surface	Real Viejo	Section 3 Real del viejo	242200	2956936	1176	Channel	1.1	LIMESTONE	0	0.0	0.00	0.0	0.0	1
223990	Surface	Real Viejo	Section 3 Real del viejo	242223	2956875	1171	Channel	0.45	LIMESTONE	0	0.0	0.00	0.0	0.0	1
223991	Surface	Real Viejo	Section 4 Real del viejo	242110	2956953	1206	Unknown	0.7	LIMESTONE	0	0.0	0.00	0.0	0.0	1
223993	Surface	Real Viejo	Section 4 Real del viejo	242142	2956978	1196	Unknown	0.4	LIMESTONE	0	0.0	0.00	0.0	0.0	1
223994	Surface	Real Viejo	Section 4 Real del viejo	242159	2956991	1185	Unknown	0.4	LIMESTONE	0	0.0	0.00	0.0	0.0	1
223995	Surface	Real Viejo	Section 4 Real del viejo	242178	2957060	1158	Unknown	0.2	LIMESTONE	0	0.0	0.00	0.0	0.0	1
223996	Surface	Real Viejo	Section 4 Real del viejo	242215	2957093	1136	Unknown	0.5	LIMESTONE	0	0.0	0.00	0.0	0.0	3
223997	Surface	Real Viejo	Section 4 Real del viejo	242241	2957140	1117	Unknown	1	LIMESTONE	0	0.0	0.00	0.0	0.0	1
223998	Surface	Real Viejo	Section 5 Real del Viejo	242027	2956974	1126	Outcrop	0.6	LIMESTONE	0	0.0	0.00	0.0	0.0	1
223999	Surface	Real Viejo	Section 5 Real del Viejo	242043	2957011	1212	Unknown	0.6	LIMESTONE	0	0.0	0.00	0.0	0.0	1
224000	Surface	Real Viejo	Section 5 Real del Viejo	242082	2957054	1185	Channel	0.9	INTRUSIVE	0	0.0	0.00	0.0	0.0	1
253003	Surface	Romulo	Romulo East	245242	2959642	981	Veinlets	0.45	LIMESTONE	0	0.0	0.00	0.0	0.0	2
253004	Surface	Romulo	Romulo East	245131	2959601	1024	Veinlets	0.6	LIMESTONE	0	0.0	0.00	0.0	0.0	1
253005	Surface	Romulo	Romulo East	244872	2959397	1059	Channel	0.4	SKARN TYPE	0	0.0	0.01	0.0	0.0	3
253006	Surface	Romulo	Romulo East	244872	2959397	1059	Dump	0	SKARN TYPE	1	0.0	0.04	0.0	0.0	7
253007	Surface	Romulo	Romulo East	245196	2959339	1030	Veinlets	0.35	LIMESTONE	0	0.0	0.00	0.0	0.0	1
253008	Surface	Romulo	Romulo East	245242	2959448	971	Veinlets	0.5	LIMESTONE	0	0.0	0.00	0.0	0.0	1
253009	Surface	Teodulo	Teodulo SW	241507	2958996	1230	Dump	-	EPITHERMAL QUARTZ VEIN	1,150	16.5	1.35	1.6	0.2	2,645
253010	Surface	Real Viejo	Section 5 Real del Viejo	242086	2957110	1167	Channel	0.45	LIMESTONE	2	0.0	0.00	0.0	0.1	8
253011	Surface	Real Viejo	Section 5 Real del Viejo	242126	2957173	1145	Channel	1	ENDOSKARN TYPE	0	0.0	0.00	0.0	0.0	1

SAMPLE ID	LOCATION	PROSPECT	AREA	EAST	NORTH	ELEVATION	SAMPLE TYPE	WIDTH (m)	MINERALIZATION STYLE	Ag g/t	Au g/t	Cu %	Pb %	Zn %	Ag Eq g/t
253013	Surface	Real Viejo	Section 5 Real del Viejo	242156	2957210	1126	Channel	0.5	INTRUSIVE	0	0.0	0.01	0.0	0.0	2
253014	Surface	Real Viejo	Section 5 Real del Viejo	242177	2957285	1121	Channel	0.35	INTRUSIVE	0	0.0	0.00	0.0	0.0	1
253015	Surface	Corrales Area	Los Corrales	243313	2957190	1072	Unknown	0.6	LIMESTONE	0	0.0	0.00	0.0	0.0	2
253016	Surface	Corrales Area	Los Corrales	243315	2957191	1071	Unknown	0.5	LIMESTONE	0	0.0	0.01	0.0	0.0	1
253017	Surface	Teodulo	Teodulo SW	241934	2958855	1237	Channel	0.4	LIMESTONE	0	0.0	0.01	0.0	0.0	2
253018	Surface	Teodulo	Teodulo SW	241991	2958907	1256	Channel	0.6	INTRUSIVE	0	0.0	0.03	0.0	0.0	4
253019	Surface	Ponciano	Ponciano	241081	2960222	1022	Channel	0.5	SKARN TYPE	0	0.4	0.24	0.0	0.0	63
253020	Surface	Romulo	Romulo	243401	2958284	1036	Dump	-	SKARN TYPE	4	0.7	0.97	0.0	0.0	177
253021	Surface	Romulo	Romulo	243405	2958275	1036	Dump	-	SKARN TYPE	1	0.4	0.19	0.0	0.0	51
253023	Surface	Romulo	Romulo	243222	2958425	1052	Channel	1	ENDOSKARN TYPE	0	0.0	0.05	0.0	0.0	9
253024	Surface	Romulo	Romulo	243223	2958425	1052	Channel	1.5	ENDOSKARN TYPE	0	0.0	0.01	0.0	0.0	3
253025	Surface	Romulo	Romulo	243137	2958493	1080	Channel	1.5	INTRUSIVE	0	0.0	0.02	0.0	0.0	5
253026	Surface	Romulo	Romulo	243125	2958499	1083	Channel	1.3	INTRUSIVE	0	0.0	0.00	0.0	0.0	1
253027	Surface	Romulo	Romulo	243126	2958499	1083	Channel	0.8	INTRUSIVE	0	0.0	0.00	0.0	0.0	1
253028	Surface	Romulo	Romulo	243393	2958787	1090	Channel	1.6	SKARN TYPE	0	0.0	0.00	0.0	0.0	1
253029	Surface	Romulo	Romulo	243394	2958784	1090	Channel	1.8	SKARN TYPE	0	0.0	0.00	0.0	0.0	1
253030	Surface	Romulo	Romulo	243399	2958778	1092	Channel	1.5	SKARN TYPE	0	0.0	0.00	0.0	0.0	1
253031	Surface	Romulo	Romulo	243399	2958777	1092	Channel	1.5	SKARN TYPE	0	0.0	0.00	0.0	0.0	1
253033	Surface	Romulo	Romulo	243399	2958776	1092	Channel	1.5	SKARN TYPE	0	0.0	0.00	0.0	0.0	1
253036	Surface	Romulo	Romulo	243411	2958768	1090	Channel	1	SKARN TYPE	0	0.0	0.03	0.0	0.0	7
253037	Surface	Romulo	Romulo	243413	2958771	1089	Channel	0.8	SKARN TYPE	0	0.0	0.01	0.0	0.0	2
253038	Surface	La Soledad	La Soledad	243884	2960561	979	Dump	-	SKARN TYPE	12	2.1	2.09	0.0	0.0	429
253039	Surface	La Soledad	La Soledad	243138	2960706	991	Dump	-	SKARN TYPE	7	1.6	1.86	0.0	0.0	350
253040	Surface	Romulo	Romulo	242765	2959094	1108	Channel	1	FAULT BRECCIA	1	0.1	0.24	0.0	0.0	42
253041	Surface	Romulo	Romulo	242764	2959097	1108	Channel	1.9	FAULT BRECCIA	0	0.0	0.09	0.0	0.0	13
253043	Surface	Romulo	Romulo	242765	2959102	1110	Channel	1.7	FAULT BRECCIA	1	0.0	0.09	0.1	0.0	18
253044	Surface	Romulo	Romulo	242754	2959089	1113	Channel	1	FAULT BRECCIA	0	0.0	0.06	0.0	0.0	8
253045	Surface	Romulo	Romulo	242754	2959090	1109	Channel	1.4	FAULT BRECCIA	4	0.0	0.07	0.0	0.0	16
253046	Surface	Romulo	Romulo	242753	2959091	1109	Channel	1	FAULT BRECCIA	0	0.0	0.02	0.0	0.1	7
253047	Surface	Romulo	Romulo	242755	2959092	1107	Channel	1.6	FAULT BRECCIA	7	0.0	0.11	0.0	0.0	24
253048	Surface	Romulo	Romulo	242756	2959094	1108	Channel	1	FAULT BRECCIA	43	0.0	0.09	0.6	0.2	92
253049	Surface	Romulo	Romulo	242757	2959096	1108	Channel	0.7	FAULT BRECCIA	30	0.0	0.14	0.1	0.2	61
253050	Surface	Romulo	Romulo	242758	2959096	1109	Channel	0.7	FAULT BRECCIA	85	0.0	0.12	0.3	0.2	126
253051	Surface	Romulo	Romulo	242759	2959096	1108	Channel	1.1	FAULT BRECCIA	24	0.0	0.06	0.1	0.1	41
253053	Surface	Romulo	Romulo	242758	2959099	1110	Channel	1	FAULT BRECCIA	17	0.0	0.06	0.0	0.1	31
253056	Surface	Real Viejo	Arturo mine	241791	2957241	1179	Channel	0.9	LIMESTONE	1	0.0	0.00	0.0	0.0	2
253057	Surface	Real Viejo	Arturo mine	241788	2957249	1179	Channel	0.7	INTRUSIVE	16	0.0	0.01	0.1	0.5	52
253058	Surface	Real Viejo	Arturo mine	241787	2957250	1179	Channel	1.1	INTRUSIVE	42	0.0	0.00	0.0	0.2	57
253059	Surface	Real Viejo	Arturo mine	241785	2957252	1181	Channel	0.65	FAULT BRECCIA	1	0.0	0.00	0.0	0.0	4
253060	Surface	Real Viejo	Arturo mine	241787	2957252	1181	Channel	1.5	FAULT BRECCIA	88	0.0	0.04	0.6	0.7	162
253061	Surface	Real Viejo	Arturo mine	241785	2957255	1181	Channel	0.6	FAULT BRECCIA	30	0.0	0.01	0.1	0.1	41
253062	Surface	Real Viejo	Arturo mine	241788	2957256	1186	Channel	0.95	FAULT BRECCIA	160	0.0	0.06	0.4	0.1	189
253064	Surface	La Soledad	Las Abejas	243145	2960706	991	Channel	0.6	SKARN TYPE	6	0.6	1.25	0.0	0.0	200
253065	Surface	La Soledad	Las Abejas	243145	2960707	991	Channel	0.9	SKARN TYPE	1	0.3	0.13	0.0	0.0	36
253066	Surface	La Soledad	La Soledad	243146	2960706	991	Channel	0.45	SKARN TYPE	1	0.1	0.35	0.0	0.0	54
253067	Surface	Real Viejo	Real Viejo	241996	2957050	1184	Channel	0.75	LIMESTONE	8	0.0	0.02	0.1	0.1	23
253068	Surface	Real Viejo	Real Viejo	241997	2957051	1184	Grab	-	FAULT	190	0.0	0.11	0.3	1.8	322
253069	Surface	Real Viejo	Real Viejo	241993	2957051	1184	Channel	0.8	LIMESTONE	3	0.0	0.00	0.0	0.0	6
253070	Surface	Real Viejo	Real Viejo	241994	2957053	1184	Channel	1	LIMESTONE	3	0.0	0.01	0.1	0.0	8
253071	Surface	Teodulo	Teodulo	242312	2959571	1146	Channel	0.8	INTRUSIVE	2	0.0	0.01	0.0	0.0	4
253072	Surface	Teodulo	Teodulo	242313	2959571	1146	Channel	0.8	INTRUSIVE	2	0.0	0.01	0.0	0.0	4
253094	Surface	Teodulo	Teodulo	243242	2959503	1133	Channel	1	ENDOSKARN TYPE	1	0.0	0.02	0.0	0.0	6
253095	Surface	Teodulo	Teodulo	243221	2959502	1134	Dump	-	ENDOSKARN TYPE	2	0.9	0.78	0.0	0.0	163
253096	Surface	Teodulo	Teodulo	243502	2959736	1048	Dump	-	SKARN TYPE	1	0.1	1.18	0.0	0.0	151
253100	Surface	Teodulo	Teodulo	242684	2959066	1153	Dump	-	ENDOSKARN TYPE	1	0.0	0.04	0.0	0.0	7
253101	Surface	Teodulo	Teodulo	242535	2959035	1222	Channel	0.65	EPITHERMAL QUARTZ VEIN	1	0.0	0.02	0.0	0.0	6
253102	Surface	Teodulo	Teodulo	242536	2959035	1222	Channel	0.75	EPITHERMAL QUARTZ VEIN	1	0.0	0.01	0.0	0.0	2
253103	Surface	Teodulo	Teodulo	242539	2959036	1231	Channel	1.3	EPITHERMAL QUARTZ VEIN	1	0.0	0.00	0.0	0.0	2
223824	UG	Real Viejo	Marco Mine	241604	2957465	1230	Channel	1.0	BRECCIA	0	0.0	0.10	0.1	0.1	25
223825	UG	Real Viejo	La Negra mine	242220	2957180	1126	Channel	1.0	BRECCIA	116	0.0	0.05	0.2	4.2	382
223826	UG	Real Viejo	La Negra mine	242221	2957181	1126	Channel	1.2	BRECCIA	714	0.0	0.08	0.5	1.1	814
223827	UG	Real Viejo	La Negra mine	242222	2957182	1126	Channel	0.9	BRECCIA	388	0.1	0.13	1.2	3.5	666
223828	UG	Real Viejo	La Negra mine	242217	2957182	1126	Channel	0.9	INTRUSIVE	24	0.0	0.02	0.1	1.8	142
223866	UG	Romulo	Romulo mines	243311	2958564	1094	Channel	1.4	ENDOSKARN TYPE	1	0.1	0.05	0.0	0.0	13
223867	UG	Romulo	Romulo mines	243312	2958564	1094	Channel	1.1	ENDOSKARN TYPE	0	0.0	0.03	0.0	0.0	5
223871	UG	Romulo	Romulo mines	243313	2958563	1089	Channel	1.1	BRECCIA	0	0.3	0.09	0.0	0.0	32
223872	UG	Romulo	Romulo mines	243313	2958564	1089	Channel	0.7	SKARN TYPE	0	0.2	0.14	0.0	0.0	33
223873	UG	Romulo	Romulo mines	243315	2958563	1089	Channel	0.75	SKARN TYPE	0	0.1	0.08	0.0	0.0	19
223874	UG	Romulo	Romulo mines	243315	2958564	1089	Channel	0.85	SKARN TYPE	0	0.6	0.40	0.0	0.0	93
223875	UG	Romulo	Romulo mines	243313	2958566	1089	Channel	0.7	ENDOSKARN TYPE	1	0.5	0.27	0.0	0.0	74
223876	UG	Romulo	Romulo mines	243312	2958566	1089	Channel	0.7	ENDOSKARN TYPE	0	0.4	0.11	0.0	0.0	41

SAMPLE ID	LOCATION	PROSPECT	AREA	EAST	NORTH	ELEVATION	SAMPLE TYPE	WIDTH (m)	MINERALIZATION STYLE	Ag g/t	Au g/t	Cu %	Pb %	Zn %	Ag Eq g/t
223877	UG	Romulo	Romulo mines	243311	2958567	1089	Channel	1.15	INTRUSIVE	0	0.0	0.03	0.0	0.0	4
223878	UG	Romulo	Romulo mines	243311	2958567	1089	Channel	1	ENDOSKARN TYPE	1	0.1	0.13	0.0	0.0	27
223879	UG	Romulo	Romulo mines	243310	2958568	1089	Channel	1.4	ENDOSKARN TYPE	0	0.1	0.17	0.0	0.0	27
223881	UG	Romulo	Romulo mines	243310	2958569	1090	Channel	0.8	ENDOSKARN TYPE	3	0.3	0.39	0.0	0.0	78
223882	UG	Romulo	Romulo mines	243310	2958571	1091	Channel	1.4	INTRUSIVE	0	0.0	0.01	0.0	0.0	3
223883	UG	Romulo	Romulo mines	243308	2958571	1091	Channel	1.2	ENDOSKARN TYPE	0	0.0	0.02	0.0	0.0	3
223884	UG	Romulo	Romulo mines	243309	2958573	1094	Channel	1.5	ENDOSKARN TYPE	1	0.0	0.06	0.0	0.0	11
223885	UG	Romulo	Romulo mines	243309	2958571	1091	Channel	0.5	ENDOSKARN TYPE	0	0.0	0.00	0.0	0.1	5
223886	UG	Romulo	Romulo mines	243315	2958566	1098	Channel	1.45	ENDOSKARN TYPE	0	0.1	0.03	0.0	0.0	9
223887	UG	Romulo	Romulo mines	243314	2958563	1098	Channel	0.55	ENDOSKARN TYPE	1	0.6	0.34	0.0	0.0	88
223888	UG	Romulo	Romulo mines	243314	2958562	1098	Channel	2	ENDOSKARN TYPE	0	0.0	0.01	0.0	0.0	2
253074	UG	Real Viejo	Mina de Chuy	241867	2957209	1170	Channel	0.45	FAULT BRECCIA	383	0.0	0.18	0.8	1.4	526
253075	UG	Real Viejo	Mina de Chuy	241866	2957200	1143	Channel	0.65	BRECCIA	1,005	0.0	0.36	2.1	5.9	1,493
253076	UG	Real Viejo	Mina de Chuy	241866	2957201	1143	Channel	0.6	LIMESTONE	2	0.0	0.00	0.0	0.1	6
253077	UG	Real Viejo	Mina de Chuy	241865	2957199	1143	Channel	0.3	DYKE	7	0.0	0.00	0.0	0.1	17
253078	UG	Real Viejo	Mina de Chuy	241864	2957199	1143	Channel	0.8	LIMESTONE	9	0.0	0.00	0.0	0.1	17
253079	UG	Real Viejo	Mina de Chuy	241863	2957198	1143	Channel	0.3	BRECCIA	67	0.0	0.03	1.4	1.3	205
253080	UG	Real Viejo	Mina de Chuy	241860	2957204	1160	Channel	1	BRECCIA	450	0.0	0.14	2.9	16.1	1,558
253081	UG	Real Viejo	Mina de Chuy	241864	2957205	1165	Channel	0.75	BRECCIA	309	0.0	0.06	9.6	8.5	1,216
253082	UG	Real Viejo	Mina de Chuy	241867	2957207	1170	Channel	0.74	DYKE	13	0.0	0.01	0.2	1.2	96
253084	UG	Real Viejo	Mina de Chuy	241866	2957207	1170	Channel	0.8	LIMESTONE	10	0.0	0.02	0.3	0.5	51
253085	UG	Real Viejo	Mina de Chuy	241866	2957208	1170	Channel	1	BRECCIA	507	0.0	0.21	6.1	4.0	1,018
253090	UG	Teodulo	Teodulo	242271	2959555	1134	Channel	0.3	INTRUSIVE	81	0.0	0.03	0.5	0.1	114
253091	UG	Teodulo	Teodulo	242278	2959561	1134	Channel	0.66	INTRUSIVE	16	0.0	0.00	0.0	0.1	22
253092	UG	Teodulo	Teodulo	242278	2959561	1134	Channel	0.1	INTRUSIVE	642	0.1	0.04	0.6	0.1	678
253093	UG	Teodulo	Teodulo	242279	2959560	1134	Channel	0.91	INTRUSIVE	8	0.0	0.00	0.0	0.1	15
253098	UG	Real Viejo	Mina de Chuy	241869	2957211	1175	Channel	1	BRECCIA	3	0.0	0.06	0.1	0.1	22
253099	UG	Real Viejo	Mina de Chuy	241869	2957212	1175	Channel	0.9	LIMESTONE	32	0.0	0.08	0.1	0.2	58

NOTE: all numbers are rounded; assays are uncut, undiluted;

*AgEq based on USD \$1,300/oz Au, \$17/oz Ag, \$3.0/lb Cu, \$1.50/lb Zn, \$1.00/lb Pb and does not consider metallurgical recovery