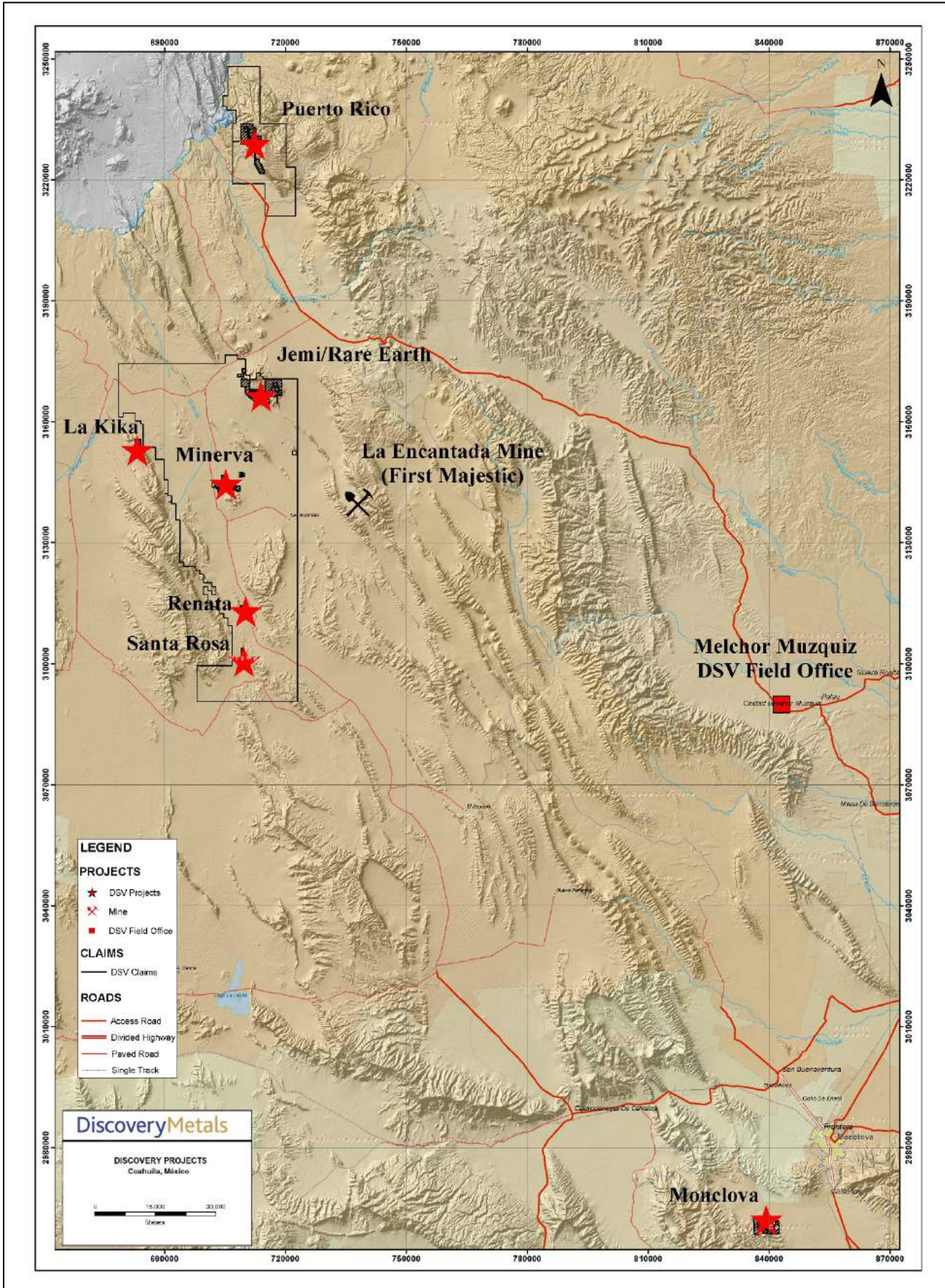
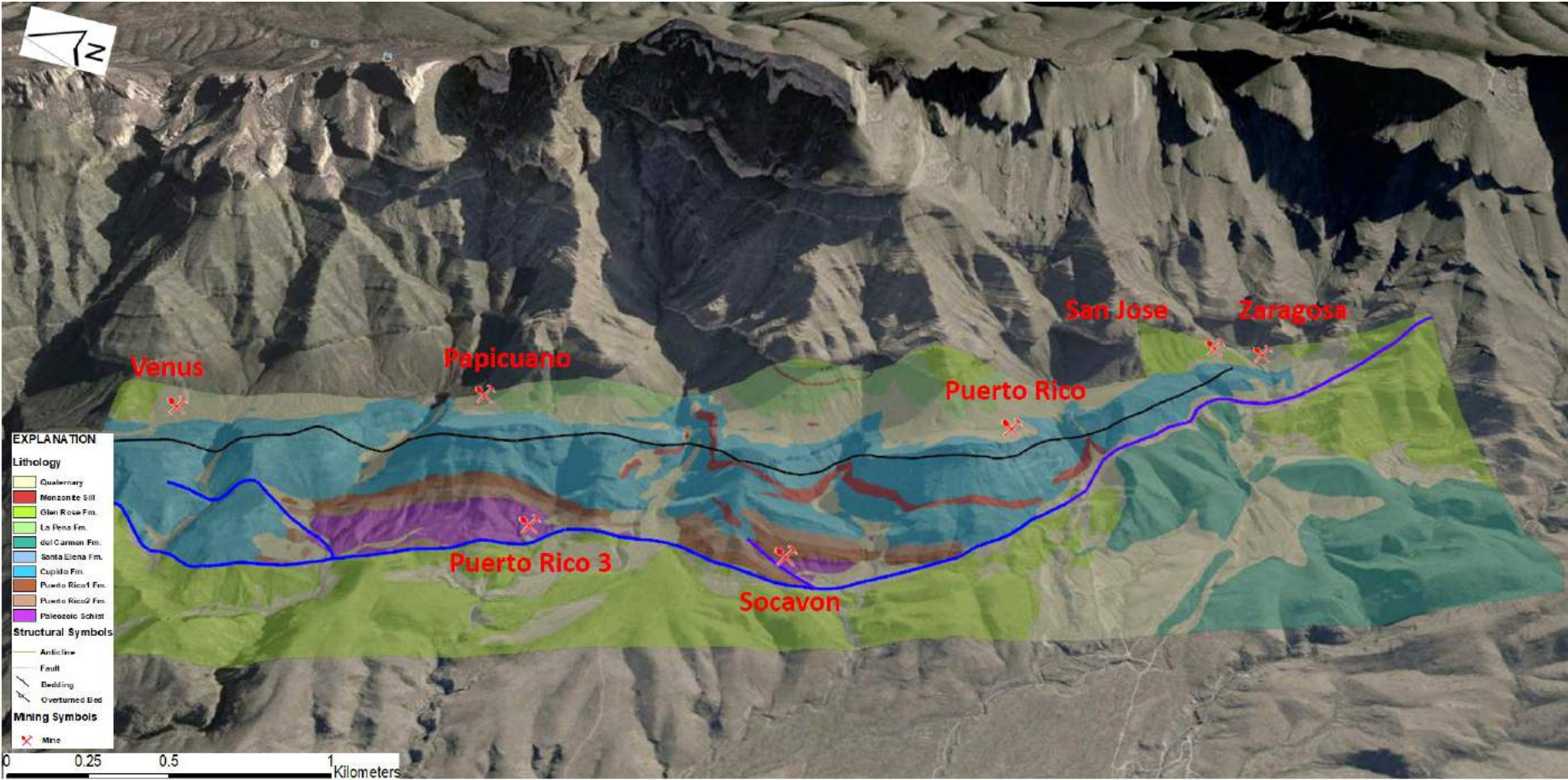


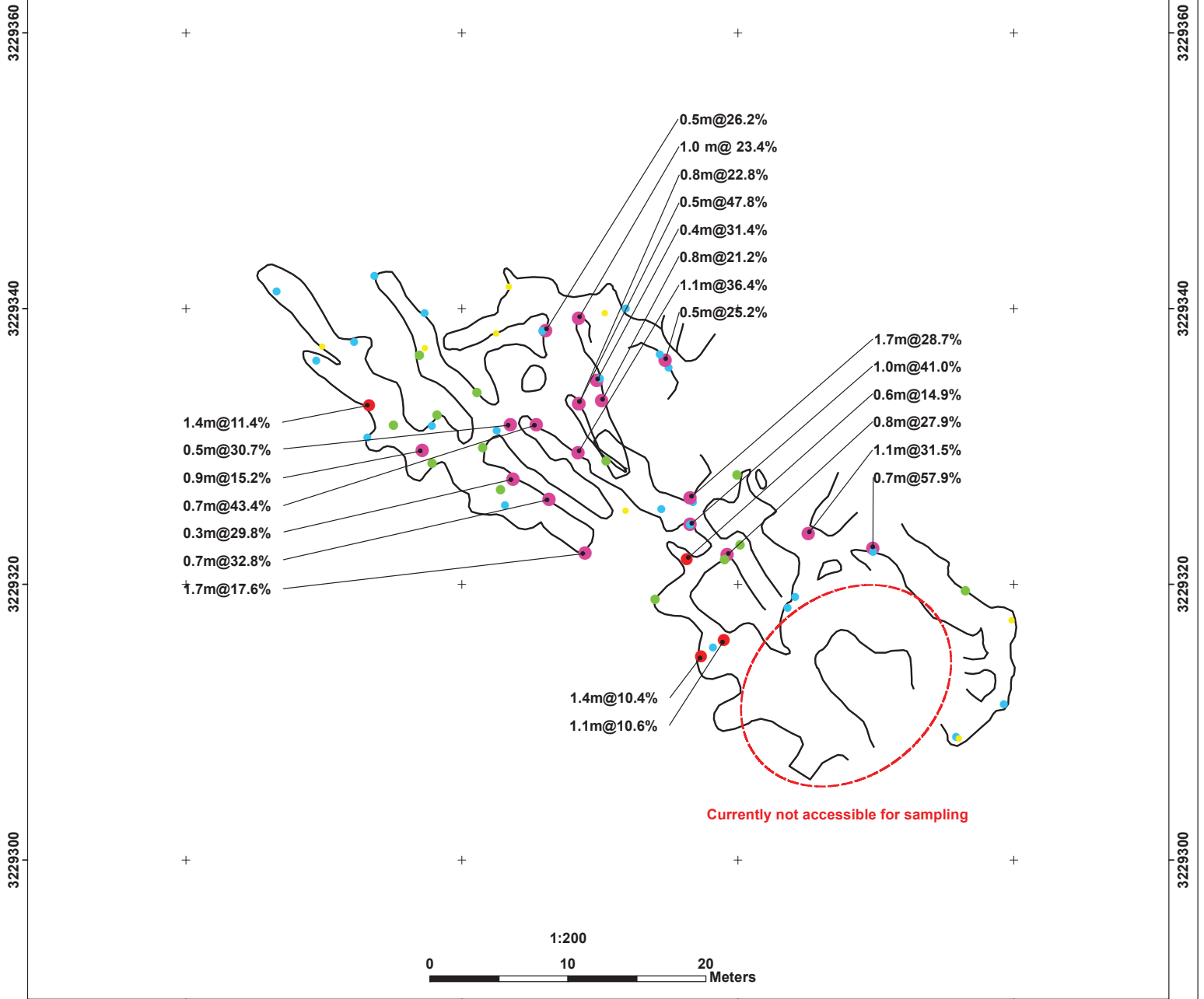
# Discovery Metals (DSV) Project locations | Northern Coahuila, Mexico



3D geology map looking East, Puerto Rico Project.



# San Jose Mine Chuyon Level Zn Eq % Results



### Zn Eq %

- < 1
- 1 - 5
- 5 - 10
- 10 - 15
- > 15

### UNDERGROUND WORK

— Chuyon Level Contour (1074 RL)

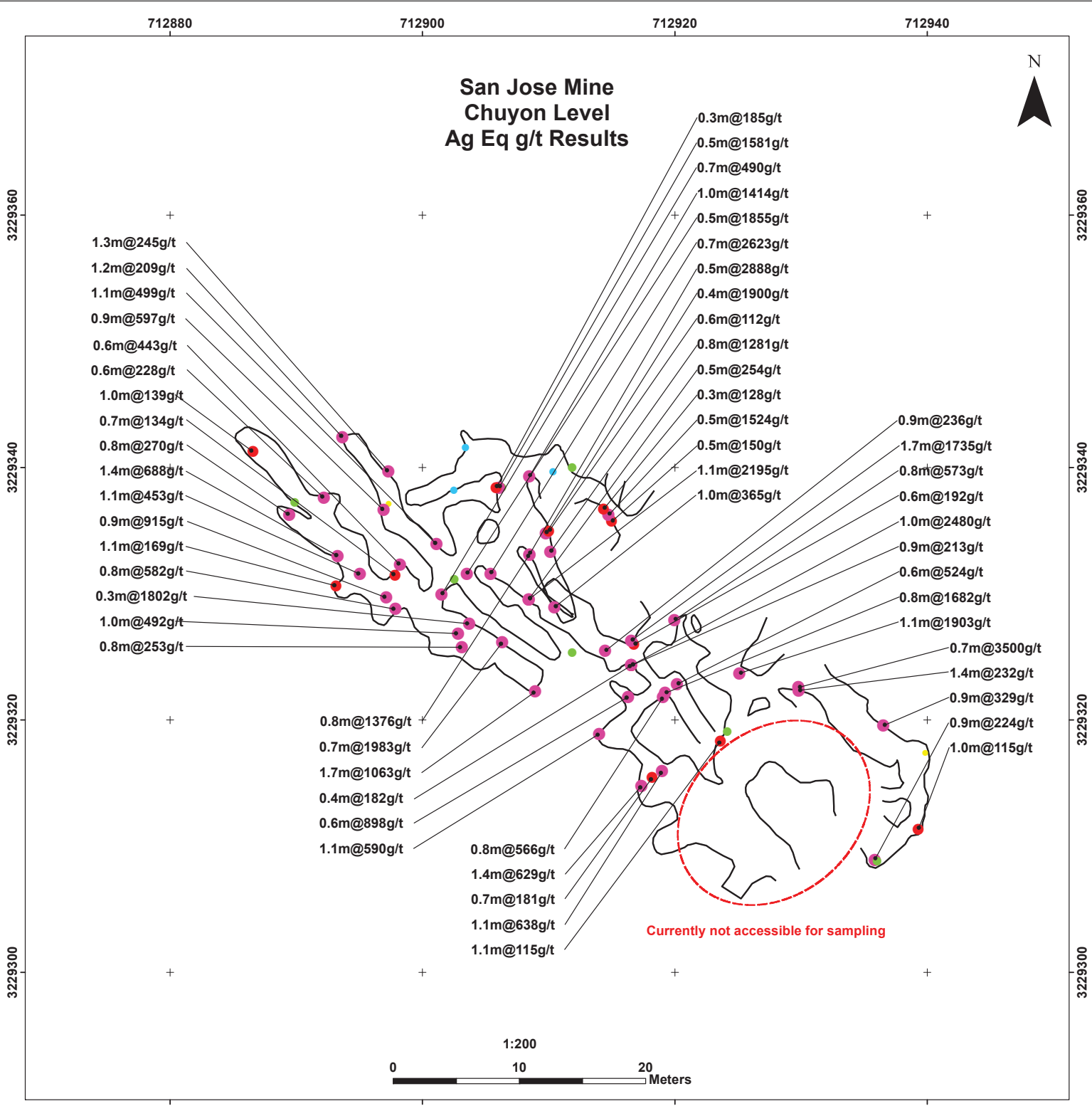
**DiscoveryMetals**

**PUERTO RICO PROJECT**

**SAN JOSE MINE**

**UNDERGROUND WORKS**

# San Jose Mine Chuyon Level Ag Eq g/t Results



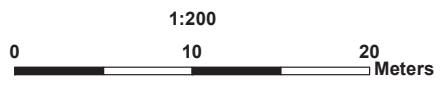
1.3m@245g/t  
1.2m@209g/t  
1.1m@499g/t  
0.9m@597g/t  
0.6m@443g/t  
0.6m@228g/t  
1.0m@139g/t  
0.7m@134g/t  
0.8m@270g/t  
1.4m@688g/t  
1.1m@453g/t  
0.9m@915g/t  
1.1m@169g/t  
0.8m@582g/t  
0.3m@1802g/t  
1.0m@492g/t  
0.8m@253g/t

0.3m@185g/t  
0.5m@1581g/t  
0.7m@490g/t  
1.0m@1414g/t  
0.5m@1855g/t  
0.7m@2623g/t  
0.5m@2888g/t  
0.4m@1900g/t  
0.6m@112g/t  
0.8m@1281g/t  
0.5m@254g/t  
0.3m@128g/t  
0.5m@1524g/t  
0.5m@150g/t  
1.1m@2195g/t  
1.0m@365g/t

0.9m@236g/t  
1.7m@1735g/t  
0.8m@573g/t  
0.6m@192g/t  
1.0m@2480g/t  
0.9m@213g/t  
0.6m@524g/t  
0.8m@1682g/t  
1.1m@1903g/t  
0.7m@3500g/t  
1.4m@232g/t  
0.9m@329g/t  
0.9m@224g/t  
1.0m@115g/t

0.8m@1376g/t  
0.7m@1983g/t  
1.7m@1063g/t  
0.4m@182g/t  
0.6m@898g/t  
1.1m@590g/t  
0.8m@566g/t  
1.4m@629g/t  
0.7m@181g/t  
1.1m@638g/t  
1.1m@115g/t

Currently not accessible for sampling



- |                  |             |                                  |  |
|------------------|-------------|----------------------------------|--|
| <b>Ag Eq g/t</b> |             | <b>UNDERGROUND WORK</b>          |  |
| ● < 20           | ● 100 - 200 | — Chuyon Level Contour (1074 RL) |  |
| ● 20 - 50        | ● < 200     |                                  |  |
| ● 50 - 100       |             |                                  |  |

**DiscoveryMetals**

**PUERTO RICO PROJECT**

**SAN JOSE MINE**

**UNDERGROUND WORKS**

PUERTO RICO PROJECT | SAN JOSE MINE | CHANNEL SAMPLES | Results Table

Sample	Elevation (msnm)	Sample Type	Length (m)	Structural data		Mineralization Type	Ag g/t	Cu %	Pb %	Zn %	AgEq g/t	ZnEq %
				Azimuth	Dip							
215559	1078	Channel	1.1	300	11	WALLROCK	9.6	0.0	0.8	0.3	64	1.1
215561	1078	Channel	0.8	340	48	FAULT	2.4	0.0	0.2	0.2	30	0.5
215566	1074	Channel	0.7	295	15	WALLROCK	5	0.0	0.2	0.2	33	0.5
215567	1075	Channel	1.1	305	31	WALLROCK	3.6	0.0	0.4	0.3	43	0.7
215568	1076	Channel	0.44	110	20	WALLROCK	3.8	0.0	0.6	0.5	59	1.0
215569	1076	Channel	0.5	110	20	MANTO	119	0.1	15.6	13.6	1581	26.2
215570	1075	Channel	0.3	110	20	WALLROCK	3.6	0.0	1.2	2.1	185	3.1
215571	1076	Channel	1.1	220	24	FAULT	55.8	0.1	8.4	1.6	499	8.3
215572	1076	Channel	1.27	330	15	FAULT	52.1	0.2	3.6	0.5	245	4.1
215573	1075	Channel	1.2	260	65	FAULT	11.9	1.6	0.1	0.1	209	3.5
215574	1076	Channel	0.7	330	58	FAULT	2.5	0.0	0.1	0.1	16	0.3
215575	1076	Channel	0.9	170	38	FAULT	95	0.1	6.9	3.5	597	9.9
215576	1076	Channel	0.7	160	47	FAULT	20	0.1	2.1	0.2	134	2.2
215577	1075	Channel	0.64	160	47	FAULT	35.3	0.8	6.0	1.2	443	7.3
215578	1075	Channel	0.62	310	9	WALLROCK	17.8	1.7	0.1	0.1	228	3.8
215579	1076	Channel	1.00	135	75	WALLROCK	7.5	1.0	0.1	0.1	139	2.3
215582	1075	Channel	0.62	315	43	WALLROCK	1.7	0.2	0.3	0.2	52	0.9
215583	1076	Channel	0.82	135	52	FAULT	12.9	0.3	1.7	2.4	270	4.5
215584	1075	Channel	1.40	315	52	FAULT	43.4	5.1	0.1	0.3	688	11.4
215585	1075	Channel	1.15	135	75	FAULT	21.2	3.5	0.1	0.1	453	7.5
215586	1074	Channel	1.10	n/a	n/a	WALLROCK	32	0.1	2.7	0.3	169	2.8
215587	1075	Channel	0.94	310	90	FAULT	187	2.6	8.3	1.3	915	15.2
215588	1074	Channel	0.85	310	90	FAULT	102	0.1	10.3	0.8	582	9.6
215589	1075	Channel	1.70	120	40	CHIMNEY	79.9	0.1	2.1	14.7	1063	17.6
215590	1076	Channel	0.70	315	52	FAULT	62.1	0.1	7.6	1.9	490	8.1
215591	1076	Channel	0.90	325	45	WALLROCK	9.6	0.0	0.6	0.5	70	1.2
215592	1076	Channel	0.50	325	45	FAULT	237	0.2	35.8	2.6	1855	30.7
215593	1075	Channel	0.65	330	9	MANTO	511	0.2	16.1	23.8	2623	43.4
215594	1075	Channel	0.50	330	9	WALLROCK	20.2	0.0	0.8	3.3	254	4.2
215595	1076	Channel	1.05	330	39	MANTO	363	0.6	3.9	26.6	2195	36.4
215596	1075	Channel	0.60	330	59	WALLROCK	13	0.0	0.1	0.6	54	0.9
215597	1078	Channel	0.86	150	36	FAULT	11.6	0.0	0.5	3.3	236	3.9
215598	1078	Channel	1.00	130	64	MANTO	324	0.2	4.0	32.8	2481	41.1
215599	1077	Channel	0.40	100	50	WALLROCK	10.6	0.1	0.1	2.6	182	3.0
215600	1077	Channel	0.93	100	50	CHIMNEY	15.1	0.8	0.4	1.4	213	3.5
215602	1079	Channel	0.60	150	50	FAULT	44.4	0.0	2.8	12.2	898	14.9
215603	1078	Channel	1.10	125	70	CHIMNEY	26.7	0.0	1.1	8.5	590	9.8
215604	1081	Channel	1.35	320	65	CHIMNEY	90.9	0.1	12.2	0.5	629	10.4
215605	1081	Channel	0.65	130	60	CHIMNEY	34.8	0.0	3.2	0.2	181	3.0
215606	1081	Channel	1.15	130	60	CHIMNEY	24.4	0.0	0.5	9.8	638	10.6
215607	1078	Channel	0.60	130	60	MANTO	19.3	0.0	0.7	7.9	524	8.7
215608	1078	Channel	0.75	320	30	MANTO	145	0.1	2.5	23.6	1682	27.9
215609	1078	Channel	0.50	320	30	WALLROCK	6.8	0.0	0.1	1.0	76	1.3
215610	1077	Channel	0.80	320	80	CHIMNEY	57.2	2.7	1.0	2.4	566	9.4
215611	1079	Channel	0.85	40	70	MANTO	14	0.3	0.7	8.1	573	9.5
215612	1082	Channel	1.05	305	50	FAULT	8.2	0.1	0.6	1.1	115	1.9
215613	1081	Channel	1.40	305	50	WALLROCK	7.8	0.1	0.3	0.7	79	1.3
215614	1078	Channel	0.70	290	30	MANTO	440	0.3	49.5	17.2	3501	58.0
215615	1077	Channel	1.35	290	30	WALLROCK	13.1	0.3	1.1	2.3	232	3.9
215616	1079	Channel	0.90	290	37	FAULT	17.1	1.1	1.1	0.5	224	3.7
215617	1078	Channel	0.80	300	35	WALLROCK	4.4	0.1	0.4	0.3	51	0.8
215618	1078	Channel	1.00	165	80	CHIMNEY	6.5	0.8	0.2	0.1	115	1.9
215619	1078	Channel	1.30	320	20	WALLROCK	2.5	0.0	0.1	0.1	17	0.3
215621	1079	Channel	0.90	320	20	WALLROCK	46.8	0.3	4.7	0.9	329	5.5
215622	1079	Channel	1.15	5	15	MANTO	373	0.9	11.7	15.7	1903	31.5
215623	1078	Channel	0.53	310	20	WALLROCK	27.8	0.0	2.6	0.2	150	2.5
215624	1077	Channel	0.45	310	20	MANTO	153	0.1	17.8	10.6	1524	25.2
215625	1077	Channel	0.35	310	20	WALLROCK	8.9	0.1	0.7	1.3	128	2.1
215626	1078	Channel	0.65	146	45	FAULT	12	0.0	0.4	2.7	192	3.2
215627	1077	Channel	1.70	146	45	MANTO	32.3	0.2	0.8	27.4	1735	28.7
215628	1075	Channel	0.85	300	6	MANTO	87.1	0.0	3.1	19.2	1376	22.8
215629	1074	Channel	0.50	300	6	WALLROCK	96.5	0.1	0.6	45.6	2889	47.8
215630	1075	Channel	1.00	150	26	MANTO	14.3	0.4	0.2	4.8	365	6.1
215631	1076	Channel	0.85	320	75	FAULT	23.6	0.2	0.3	20.3	1281	21.2
215632	1076	Channel	0.36	228	75	FAULT	46.6	0.1	1.7	29.4	1901	31.5
215633	1075	Channel	0.62	228	75	WALLROCK	17.9	0.0	0.3	1.3	112	1.9
215634	1075	Channel	1.00	332	54	FAULT	114	0.1	23.6	5.6	1414	23.4
215644	1075	Channel	0.85	140	46	CHIMNEY	15	1.9	0.1	0.2	253	4.2
215645	1075	Channel	0.97	140	46	CHIMNEY	58.2	2.3	1.0	1.9	492	8.1
215646	1075	Channel	0.26	125	32	MANTO	609	0.8	4.1	15.5	1802	29.8
215647	1070	Channel	0.70	125	32	WALLROCK	118	0.1	0.9	30.0	1983	32.8